

香港中文大學建築學院第二十七屆建築碩士畢業作品展展覽  
CUHK's School of Architecture 27<sup>th</sup> Master of Architecture Graduation Show  
精選學生作品  
Selected Student Projects

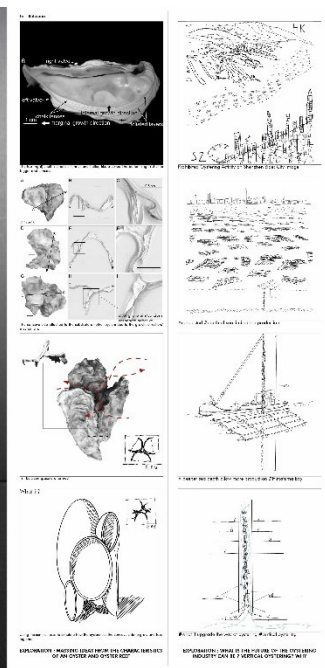
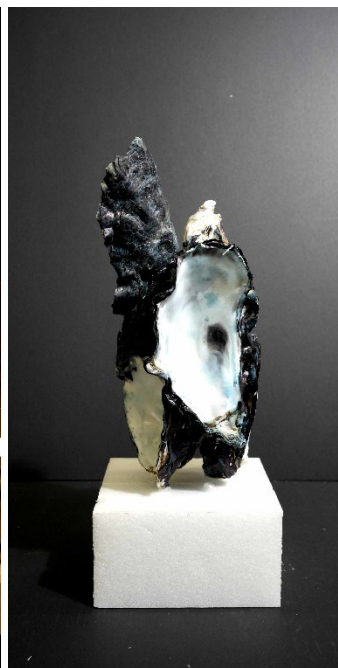
作品：后海「蠔」庭

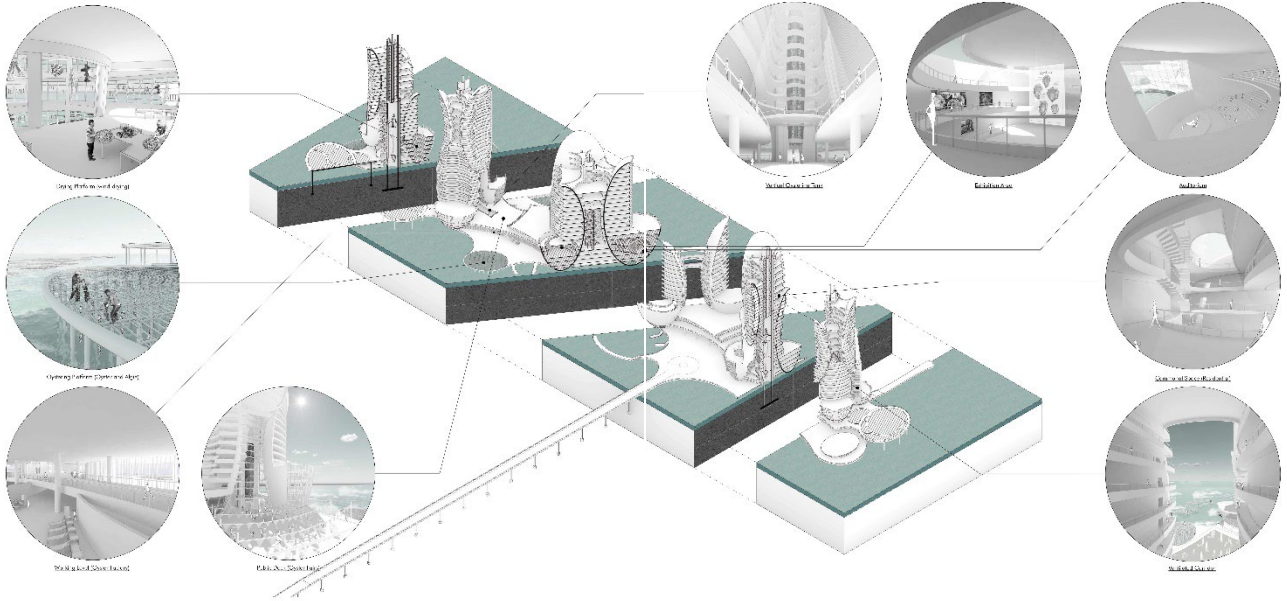
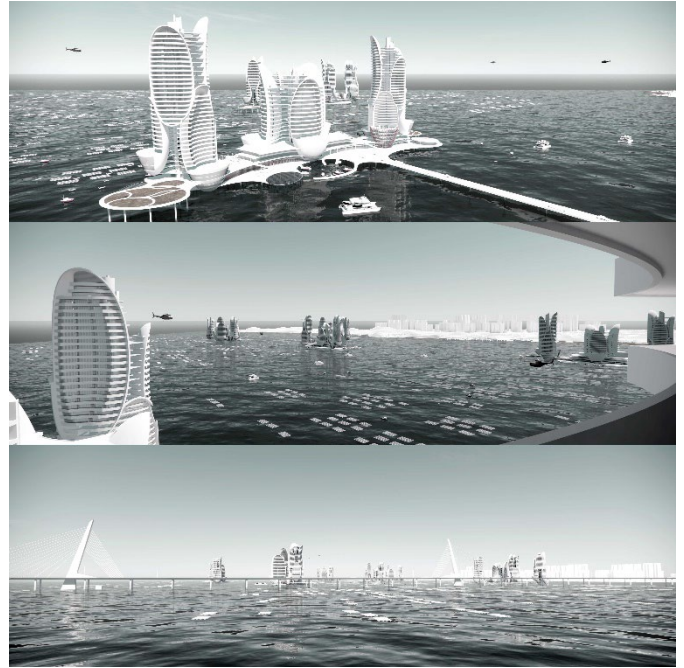
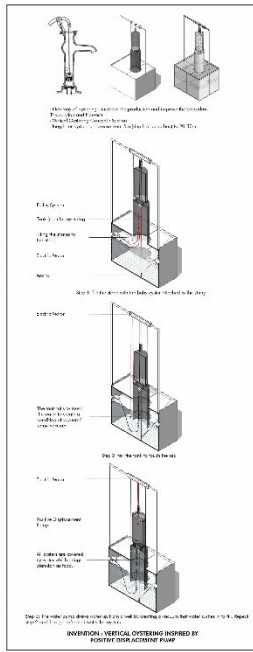
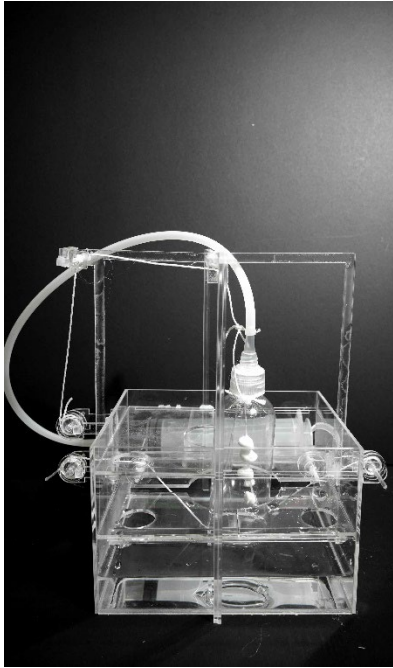
學生：楊俊賢

這個設計項目的焦點，是如何將流浮山養蠔產業、住屋和社區整合於混合用途的樓宇中，創造一個振興養蠔傳統的環境。樓宇外形的設計靈感來自蠔殼的曲線。樓宇的下層建立了養蠔的系統、養殖場和加工設施，而上層則是住宅。這種空間的結合強調水產養殖生態和社會的關聯，讓本地人和遊客了解可持續海鮮的生產過程。

**Project: "IN – BETWEEN THE REEF" – Integration Of Living And Oystering Through The Medium Space**  
Student: YEUNG Chun Yin Andy

The project investigates how the Lau Fau Shan oystering industry, housing and the community can be integrated in mixed-use towers, thereby creating a neighborhood that celebrates and revitalises the oystering tradition. The towers' design is inspired by the organic curve of the oyster shell. The lower levels of the towers will house an oystering system, nurseries and processing facilities, while the upper levels are for residential purposes. This integration creates spaces that emphasise the ecological and social connectivity of aquaculture, offering the locals and tourists educational opportunities to appreciate sustainable seafood production.





## 作品：TEMPUS

學生：凌栢蔚

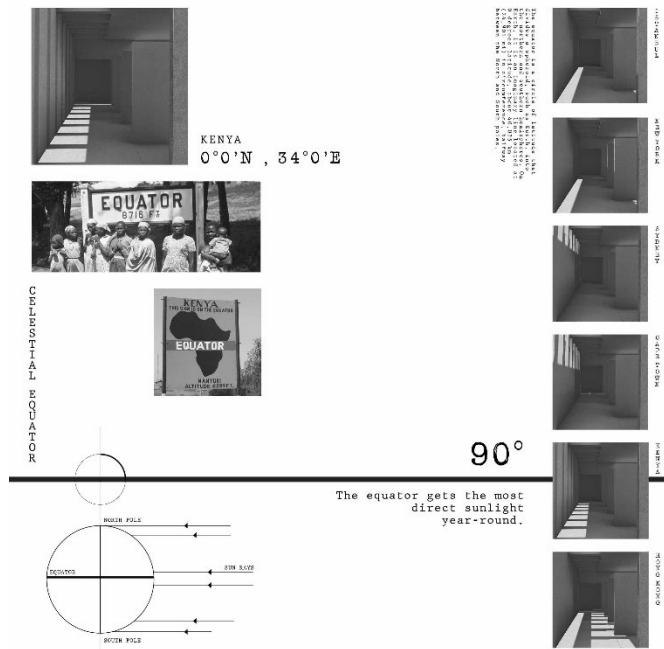
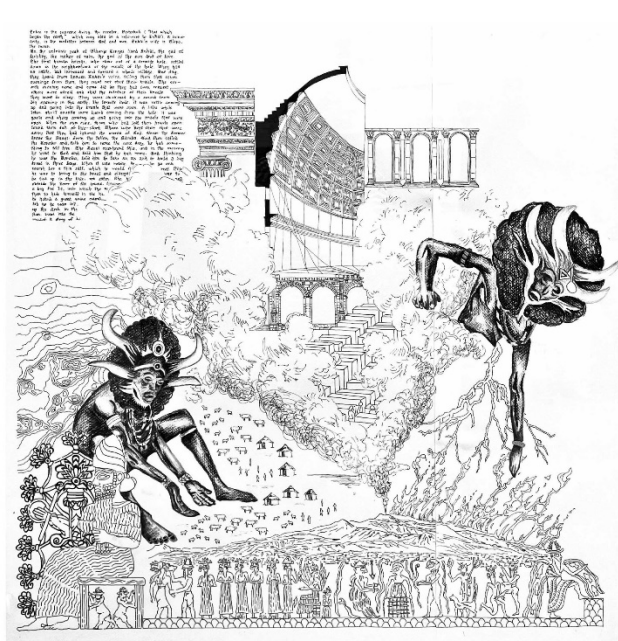
此設計項目的靈感，源於凌栢蔚 2022 年 12 月前往肯亞的一次實地考察。項目的主題，是馬賽地區土地的靈性。馬賽地區偏遠而寂靜，數百年前的火山活動令這片土地變得荒蕪蒼涼。

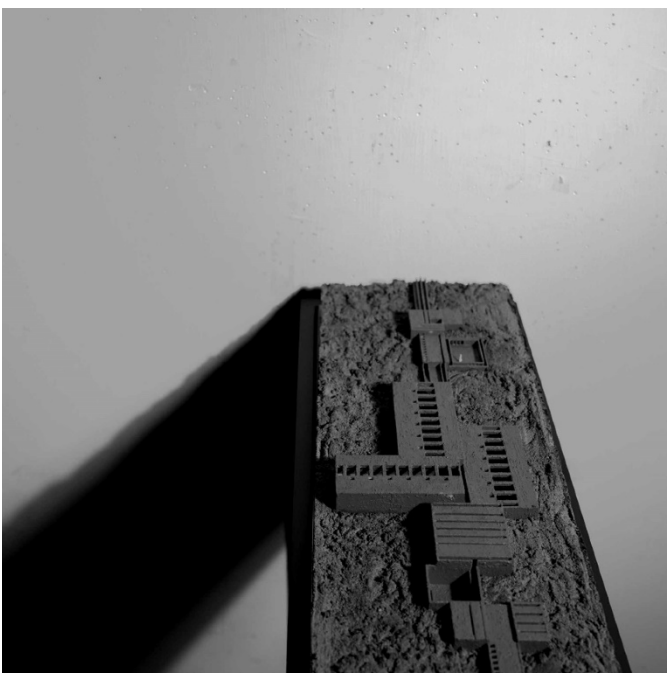
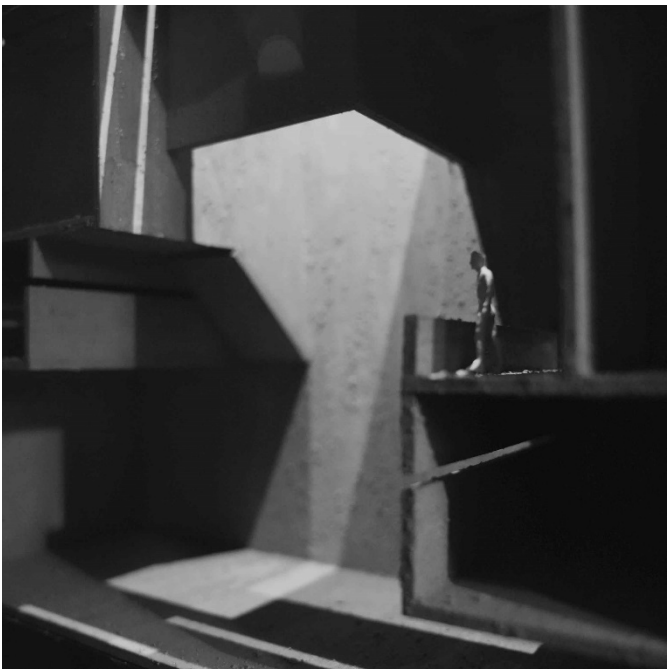
「Tempus」一詞意指「一段時間」，是一間藝術治療博物館，通過治療工作坊、展覽和自我省思等活動，幫助當地癮君子康復。它的建築設計掩沒於地平線下，與赤道對齊，融入當地環境，創造出一個由獨特光影組合而成的空間。

## Project: TEMPUS

Student: LING Pak Wai

The project, inspired by a field trip to Kenya in December 2022, is about the spirituality of the land in the Maasai area. This place is remote and quiet, with volcanic activities that have rendered the land without vegetation and habitats for centuries. “Tempus”, which translates as “a period of time”, is an art therapy museum that seeks to assist local addicts to heal through therapy workshops, exhibitions and self-reflection activities. Its design is one that is submerged in the horizon, aligning with the equator and blending into the land, with an aim to create unique composition of light and shadow within the space.





## 作品：本島木藝地區設計

學生：張雅淇

本島位於瀨戶內海的中心，是塩飽諸島中最發達的島嶼之一。位於本島的甲生區靠近海岸，擁有豐富的土地資源、神社和瀨戶內海藝術節的藝術品，適合發展為以木藝傳承為宗旨的區域。計劃興建的木工車間、畫廊、儲藏室、信息中心、辦公室和展亭，都將採用從附近十三座廢棄房屋中回收的原木、部件和材料。

### **Project: Honjima Carpentry Learning District**

Student: CHEUNG Nga Kei Cherry

Located at the centre of the Seto Inland Sea, Honjima is one of the most developed islands in the Shiwaku region. The Kosho region in Honjima, with its proximity to the coast, an abundance of land, shrines and Setouchi Triennale artworks, is chosen for the proposed development plan of a carpentry learning district. The new design for the carpentry workshop, gallery, storage, information centres, office, and pavilions will adopt wooden logs, components and materials recycled from the 13 abandoned houses in the neighbourhood.



