

## Appendix 1: CUHK Hong Kong Quality of Life Index<sup>Note1</sup>

|   | 2002<br>(Base<br>year) | 2003          | 2004          | 2005          | 2006          | 2007          | 2008          | 2009          | 2010          | 2011          | 2012          | 2012<br>compared<br>with 2011 |
|---|------------------------|---------------|---------------|---------------|---------------|---------------|---------------|---------------|---------------|---------------|---------------|-------------------------------|
| <b>Social sub-index</b>   |                        |               |               |               |               |               |               |               |               |               |               |                               |
| 1. Standardized mortality rate (per 1000 standard population)                             | 4.76                   | 4.63          | 4.63          | 4.76          | 5.02          | 5.02          | 5.02          | 5.15          | 5.15          | 5.4           | 5.4#          | Same                          |
| 2. Life expectancy at birth (in year)   | 4.76                   | 4.75          | 4.78          | 4.77          | 4.81          | 4.81          | 4.81          | 4.83          | 4.85          | 4.87          | 4.87#         | Same                          |
| 3. Public expenditure on health as a proportion (in percent) of the GDP                   | 4.76                   | 4.76          | 4.76          | 4.05          | 3.70          | 3.88          | 3.53          | 4.05          | 3.88          | 4.05          | 3.91          | Worse                         |
| 4. Notification rate of notifiable infectious diseases (per 1000 population)              | 4.76                   | 6.55          | 5.83          | 5.81          | 5.35          | 4.86          | 6.48          | 0.78          | 5.67          | 5.58          | 6.46          | Better                        |
| 5. Stress index   | 4.76                   | 5.30          | 5.74          | 6.05          | 5.98          | 6.05          | 5.69          | 5.71          | 5.92          | 5.83          | 5.89          | Better                        |
| 6. General life satisfaction index  | 4.76                   | 4.79          | 5.03          | 5.23          | 5.35          | 5.25          | 5.12          | 5.31          | 5.31          | 5.19          | 5.24          | Better                        |
| 7. Press freedom index  | 4.76                   | 4.82          | 4.77          | 4.83          | 4.83          | 4.95          | 4.93          | 4.93          | 4.87          | 4.85          | 4.79          | Worse                         |
| 8. Press criticism index  | 4.76                   | 4.94          | 4.33          | 3.75          | 3.68          | 3.90          | 3.98          | 3.77          | 3.96          | 4.11          | 4.23          | Better                        |
| 9. Government performance index   | 4.76                   | 4.91          | 6.29          | 8.08          | 8.39          | 8.73          | 6.21          | 6.91          | 6.60          | 5.62          | 6.17          | Better                        |
| 10. Overall crime rate (per 1000 population)  | 4.76                   | 3.99          | 4.49          | 4.68          | 4.48          | 4.55          | 4.73          | 4.80          | 4.94          | 4.95          | 4.99          | Better                        |
| <b>Social sub-index</b>   | <b>47.62</b>           | <b>49.44</b>  | <b>50.65</b>  | <b>52.01</b>  | <b>51.59</b>  | <b>52.00</b>  | <b>50.5</b>   | <b>46.24</b>  | <b>51.15</b>  | <b>50.45</b>  | <b>51.95</b>  | <b>Better</b>                 |
| <b>Economic sub-index</b>   |                        |               |               |               |               |               |               |               |               |               |               |                               |
| 11. Housing affordability ratio   | 4.76                   | 4.95          | 4.12          | 3.19          | 3.54          | 2.58          | 1.72          | 1.18          | -0.87         | -2.12         | -3.46         | Worse                         |
| 12. Real rental index   | 4.76                   | 5.21          | 4.95          | 4.20          | 4.00          | 3.51          | 2.98          | 3.87          | 2.94          | 2.52          | 2.36          | Worse                         |
| 13. Unemployment rate   | 4.76                   | 4.38          | 5.14          | 5.92          | 6.48          | 6.98          | 7.13          | 6.17          | 6.80          | 7.32          | 7.37          | Better                        |
| 14. Index of current economic conditions  | 4.76                   | 5.06          | 6.22          | 6.82          | 6.81          | 7.26          | 5.07          | 5.19          | 5.98          | 5.50          | 5.58          | Better                        |
| 15. Real wage index   | 4.76                   | 4.77          | 4.71          | 4.69          | 4.68          | 4.70          | 4.73          | 4.71          | 4.68          | 4.81          | 4.88          | Better                        |
| 16. Public expenditure on education as a proportion (in percent) of the GDP               | 4.76                   | 4.99          | 4.99          | 4.53          | 4.41          | 4.06          | 3.95          | 5.22          | 3.83          | 3.83          | 3.86          | Better                        |
| 17. Age participation rate for first-degree programmes in local universities (in percent) | 4.76                   | 4.94          | 4.89          | 4.92          | 5.17          | 5.22          | 5.17          | 5.17          | 5.22          | 5.42          | 5.64          | Better                        |
| <b>Economic sub-index</b>   | <b>33.32</b>           | <b>34.30</b>  | <b>35.02</b>  | <b>34.27</b>  | <b>35.09</b>  | <b>34.31</b>  | <b>30.75</b>  | <b>31.51</b>  | <b>28.58</b>  | <b>27.28</b>  | <b>26.23</b>  | <b>Worse</b>                  |
| <b>Environmental sub-index</b>  |                        |               |               |               |               |               |               |               |               |               |               |                               |
| 18. Air index   | 4.76                   | 4.45          | 4.51          | 4.94          | 4.88          | 4.87          | 4.97          | 5.23          | 5.18          | 5.03          | 5.30          | Better                        |
| 19. Water index   | 4.76                   | 4.84          | 5.01          | 5.16          | 5.17          | 5.16          | 5.23          | 5.21          | 5.39          | 5.57          | 5.48*         | Worse                         |
| 20. Noise index (per 1000 population)   | 4.76                   | 5.82          | 5.30          | 6.31          | 6.22          | 6.54          | 6.74          | 6.87          | 7.02          | 7.16          | 7.04          | Worse                         |
| 21. Recycle rate of municipal solid waste   | 4.76                   | 5.35          | 5.29          | 5.65          | 5.98          | 5.90          | 6.24          | 6.46          | 6.81          | 7.04          | 6.97*         | Worse                         |
| <b>Environmental sub-index</b>  | <b>19.04</b>           | <b>20.46</b>  | <b>20.11</b>  | <b>22.06</b>  | <b>22.25</b>  | <b>22.47</b>  | <b>23.18</b>  | <b>23.77</b>  | <b>24.4</b>   | <b>24.80</b>  | <b>24.79</b>  | <b>Worse</b>                  |
| <b>Quality of Life index</b>  | <b>100.00</b>          | <b>104.20</b> | <b>105.78</b> | <b>108.34</b> | <b>108.93</b> | <b>108.78</b> | <b>104.43</b> | <b>101.52</b> | <b>104.13</b> | <b>102.53</b> | <b>102.97</b> | <b>Better</b>                 |

<sup>Note1</sup> The higher the score, the better the performance of the indicator.

\* Forecasted figure

# Provisional figure

Revised figure

## **Appendix 2: Composition of and Data for Compiling the CUHK Hong Kong Quality of Life Index**

### **SOCIAL SUB-INDEX**

1. Standardized mortality rate (per 1000 standard population)<sup>(1)</sup> refers to the number of deaths per 1000 standard population.
2. Life expectancy at birth (in years) refers to the life expectancy at birth for males and females.
3. Public expenditure on health as a proportion (in percent) of the GDP.
4. Notification rate of notifiable infectious diseases (per 1000 population) refers to the number of notified infectious diseases per 1000 population.
5. Stress index refers to the stress that the Hong Kong people are facing (base rate = 100).
6. General life satisfaction index refers to the degree of satisfaction of Hong Kong people with their current lives (base rate = 100).
7. Press freedom index refers to the degree of press freedom in Hong Kong (base rate = 100).
8. Press criticism index refers to the frequency of criticisms by the press of the Hong Kong Corporation, the Hong Kong SAR Government, and the People's Republic of China Government (base rate = 100).
9. Government performance index refers to the degree of satisfaction of Hong Kong people with the performance of Hong Kong SAR Government (base rate = 100).
10. Overall crime rate (per 1000 population) refers to the total number of violent and non-violent crimes reported per 1000 population.

### **ECONOMIC SUB-INDEX**

11. Housing affordability ratio refers to the annual average of affordable property price (i.e. average property price times 39.9 sq. feet, divided by monthly medium income times 12).
12. Real rental index refers to the real rental index for the Hong Kong property market.
13. Unemployment rate refers to the seasonally adjusted unemployment rate (in percent).
14. Index of current economic conditions refers to the public attitude towards economic conditions in Hong Kong.
15. Real wage index<sup>(2)</sup> refers to the real wages for employees up to supervisory level (excluding managerial and professional employees) in all selected industry sectors.
16. Public expenditure on education as a proportion (in percent) of the GDP.
17. Age participation rate for first-degree programmes in local universities (in percent).

### **ENVIRONMENTAL SUB-INDEX**

18. Air index refers to the daily air pollution index.
19. Water index refers to the percentage of rivers in Hong Kong categorized as 'good' and 'excellent' by the monitoring station.
20. Noise index (per 1000 population) refers to the number of noise complaints received by the Environmental Protection Department and the Police per 1000 population.
21. Recycle rate of municipal solid waste refers to the recycle rate (in percent) of solid waste from households and from commercial and industrial sources.

#### **Notes:**

<sup>(1)</sup> Standardized mortality rate is compiled based on the world standard population published in the 1997-1999 *World Health Statistics Annual*.

<sup>(2)</sup> The real wage index is derived by deflating the nominal wage indices by the CPI(A).

#### **Sources:**

Stress index, general life satisfaction index, press freedom index, press criticism index, government performance index and index of current economic conditions are compiled by the Faculty of Social Science of The Chinese University of Hong Kong. All other indices are obtained from the government and related institutions.

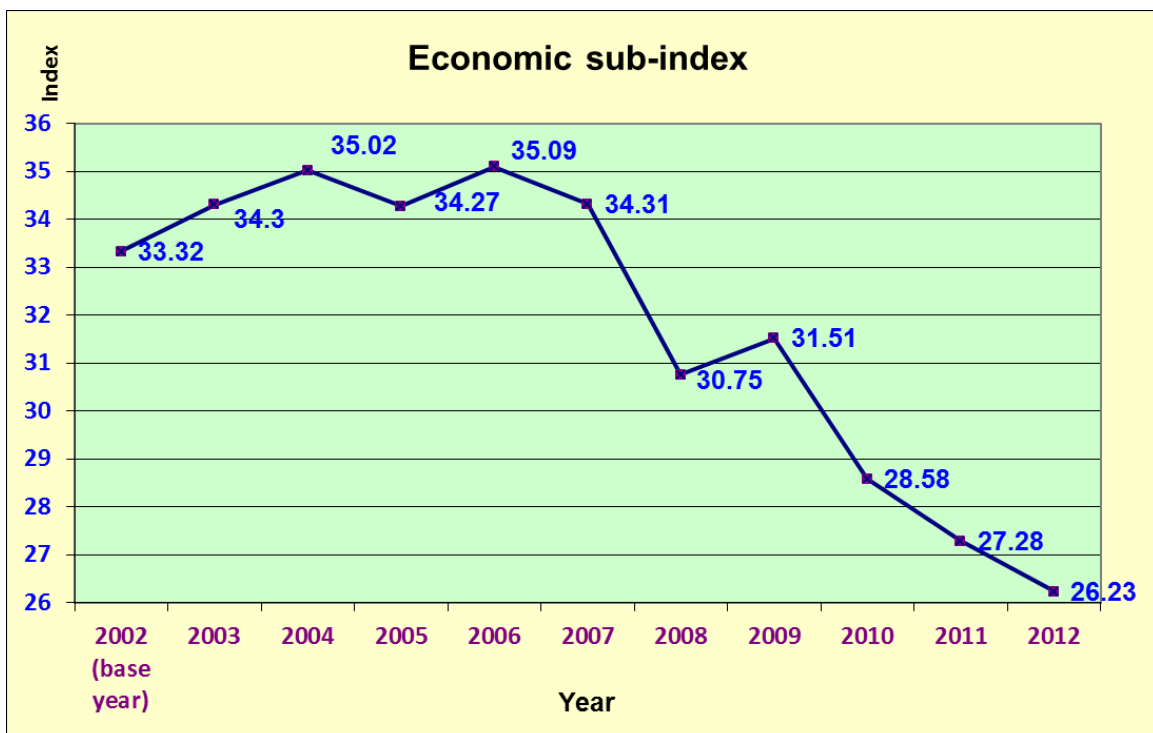
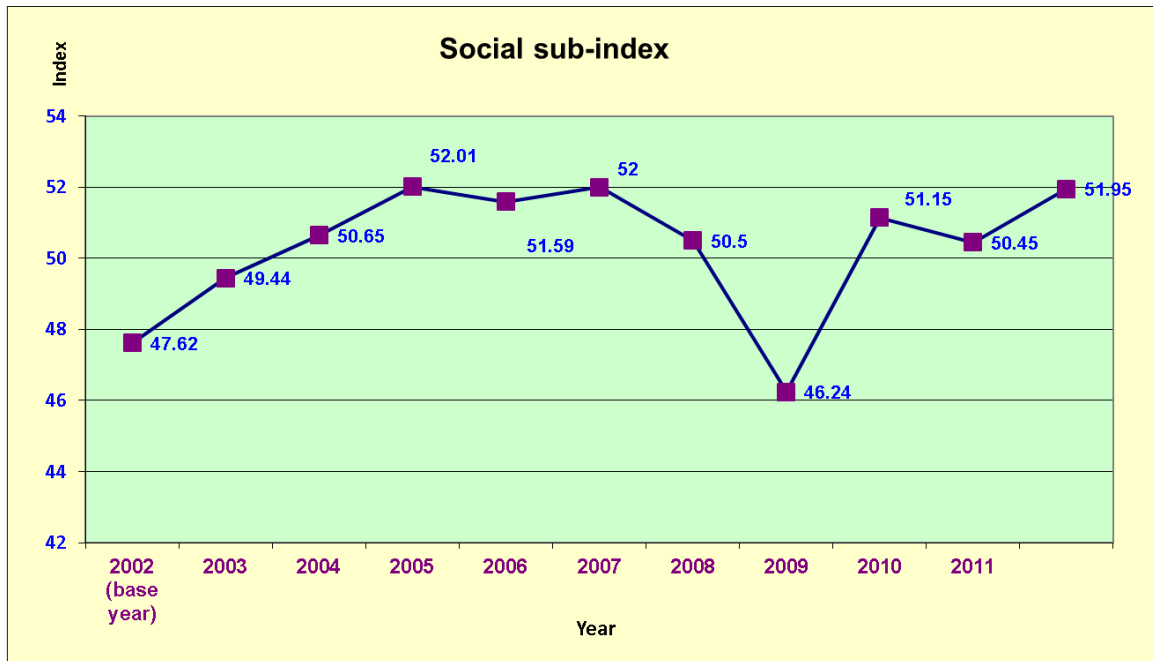
## Data for Compiling the CUHK Hong Kong Quality of Life Index

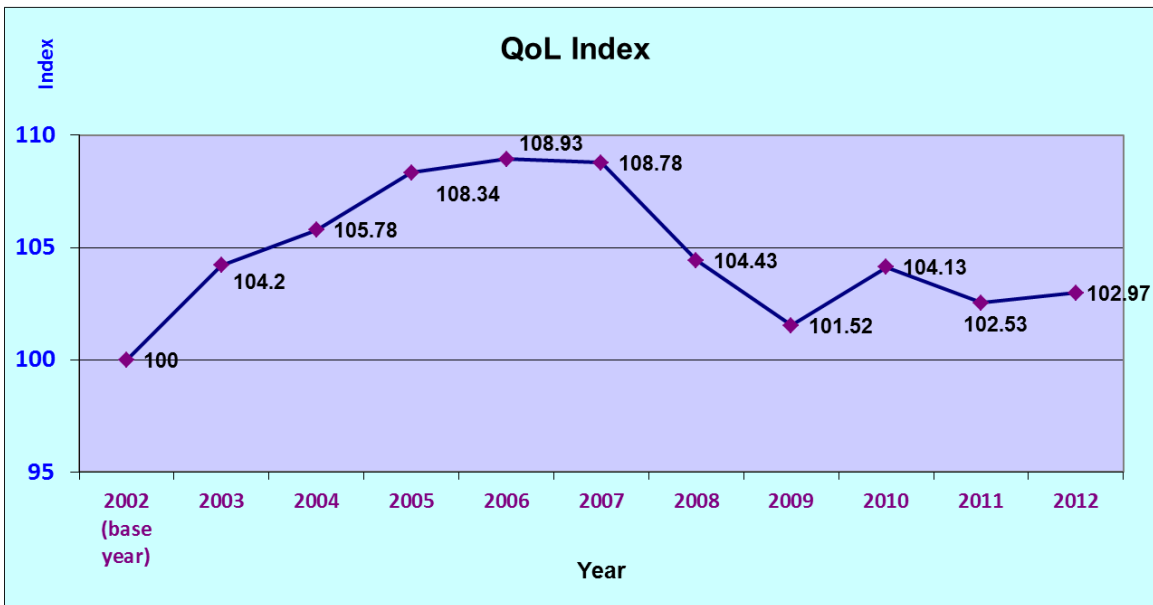
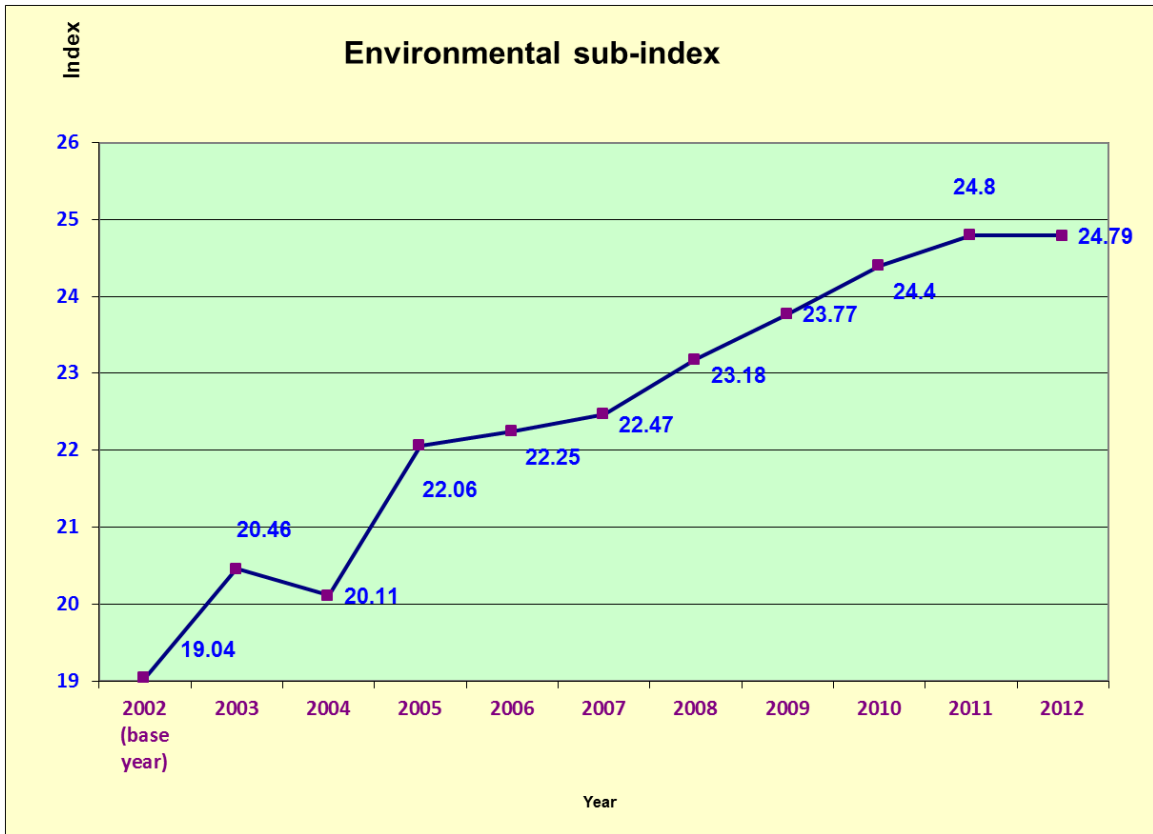
|   | 2002                 | 2003                 | 2004               | 2005               | 2006               | 2007               | 2008               | 2009               | 2010               | 2011                             | 2012                 |
|---|----------------------|----------------------|--------------------|--------------------|--------------------|--------------------|--------------------|--------------------|--------------------|----------------------------------|----------------------|
| <b>Social sub-index</b>   |                      |                      |                    |                    |                    |                    |                    |                    |                    |                                  |                      |
| 1. Standardized mortality rate (per 1000 standard population)                             | 3.70                 | 3.80                 | 3.80               | 3.70               | 3.50               | 3.50               | 3.50               | 3.40               | 3.4                | 3.2                              | <b>3.2#</b>          |
| 2. Life expectancy at birth (in years)  | F : 84.5<br>M : 78.6 | F : 84.3<br>M : 78.5 | F : 84.7<br>M : 79 | F: 84.6<br>M: 78.8 | F: 85.5<br>M: 79.4 | F: 85.5<br>M: 79.4 | F: 85.5<br>M: 79.3 | F: 85.9<br>M: 79.7 | F: 86.0<br>M: 80.1 | F: <b>86.7</b><br>M: <b>80.3</b> | F: 86.3#<br>M: 80.6# |
| 3. Public expenditure on health as a proportion (in percent) of the GDP                   | 2.70                 | 2.70                 | 2.70               | 2.30               | 2.10               | 2.20               | 2.00               | 2.30               | 2.20               | 2.30                             | <b>2.22</b>          |
| 4. Notification rate of notifiable infectious diseases (per 1000 population)              | 3.73                 | 2.33                 | 2.89               | 2.91               | 3.27               | 3.65               | 2.38               | 6.85               | 3.02               | 3.09                             | <b>2.40</b>          |
| 5. Stress index   | 100.00               | 88.75                | 79.51              | 72.95              | 74.42              | 72.91              | 80.36              | 80.00              | 75.53              | 77.45                            | <b>76.35</b>         |
| 6. General life satisfaction index  | 100.00               | 100.68               | 105.62             | 109.94             | 112.47             | 110.22             | 107.57             | 111.66             | 111.46             | 109.01                           | <b>110.10</b>        |
| 7. Press freedom index  | 100.00               | 101.22               | 100.26             | 101.43             | 101.55             | 103.92             | 103.64             | 103.54             | 102.30             | 101.95                           | <b>100.72</b>        |
| 8. Press criticism index  | 100.00               | 103.75               | 91.02              | 78.82              | 77.25              | 81.86              | 83.65              | 79.15              | 83.10              | 86.29                            | <b>88.77</b>         |
| 9. Government performance index   | 100.00               | 103.23               | 132.23             | 169.79             | 176.29             | 183.48             | 130.48             | 145.10             | 138.62             | 118.03                           | <b>129.52</b>        |
| 10. Overall crime rate (per 1000 population)  | 11.18                | 12.99                | 11.81              | 11.37              | 11.83              | 11.67              | 11.25              | 11.08              | 10.76              | 10.68                            | <b>10.64</b>         |
| <b>Economic sub-index</b>   |                      |                      |                    |                    |                    |                    |                    |                    |                    |                                  |                      |
| 11. Housing affordability ratio   | 4.68                 | 4.49                 | 5.31               | 6.22               | 5.88               | 6.82               | 7.67               | 8.20               | 10.22              | 11.44                            | <b>12.76</b>         |
| 12. Real rental index   | 87.97                | 79.67                | 84.55              | 93.11              | 96.68              | 105.27             | 114.54             | 98.99              | 115.38             | 122.68                           | <b>125.43</b>        |
| 13. Unemployment rate   | 7.34                 | 7.93                 | 6.76               | 5.55               | 4.69               | 3.92               | 3.68               | 5.17               | 4.20               | 3.39                             | <b>3.31</b>          |
| 14. Index of current economic conditions  | 76.55                | 81.32                | 99.95              | 109.75             | 109.48             | 116.70             | 81.55              | 83.40              | 96.22              | 88.50                            | <b>89.72</b>         |
| 15. Real wage index   | 117.53               | 117.70               | 116.35             | 115.78             | 115.48             | 116.08             | 116.68             | 116.30             | 115.45             | 118.65                           | <b>120.58</b>        |
| 16. Public expenditure on education as a proportion (in percent) of the GDP               | 4.10                 | 4.40                 | 4.40               | 4.00               | 3.80               | 3.50               | 3.40               | 4.50               | 3.30               | 3.30                             | <b>3.32</b>          |
| 17. Age participation rate for first-degree programmes in local universities (in percent) | 17.04                | 17.70                | 17.50              | 17.60              | 18.50              | 18.70              | 18.50              | 18.50              | 18.70              | 19.40                            | <b>20.20</b>         |
| <b>Environmental sub-index</b>  |                      |                      |                    |                    |                    |                    |                    |                    |                    |                                  |                      |
| 18. Air index   | 46.90                | 49.93                | 49.32              | 45.10              | 45.68              | 45.77              | 44.83              | 42.26              | 42.78              | 44.27                            | <b>41.58</b>         |
| 19. Water index   | 74.40                | 75.60                | 78.30              | 80.80              | 80.80              | 80.70              | 81.70              | 81.40              | 84.20              | 87.07                            | <b>85.61*</b>        |
| 20. Noise index (per 1000 population)   | 1.84                 | 1.43                 | 1.63               | 1.24               | 1.28               | 1.15               | 1.07               | 1.02               | 0.97               | 0.91                             | <b>0.96</b>          |
| 21. Recycle rate of municipal solid waste   | 36.30                | 40.82                | 40.35              | 43.09              | 45.59              | 44.96              | 47.58              | 49.30              | 51.95              | 53.65                            | <b>53.13*</b>        |

\* Forecasted figure  
# Provisional figure  
■ Revised figure

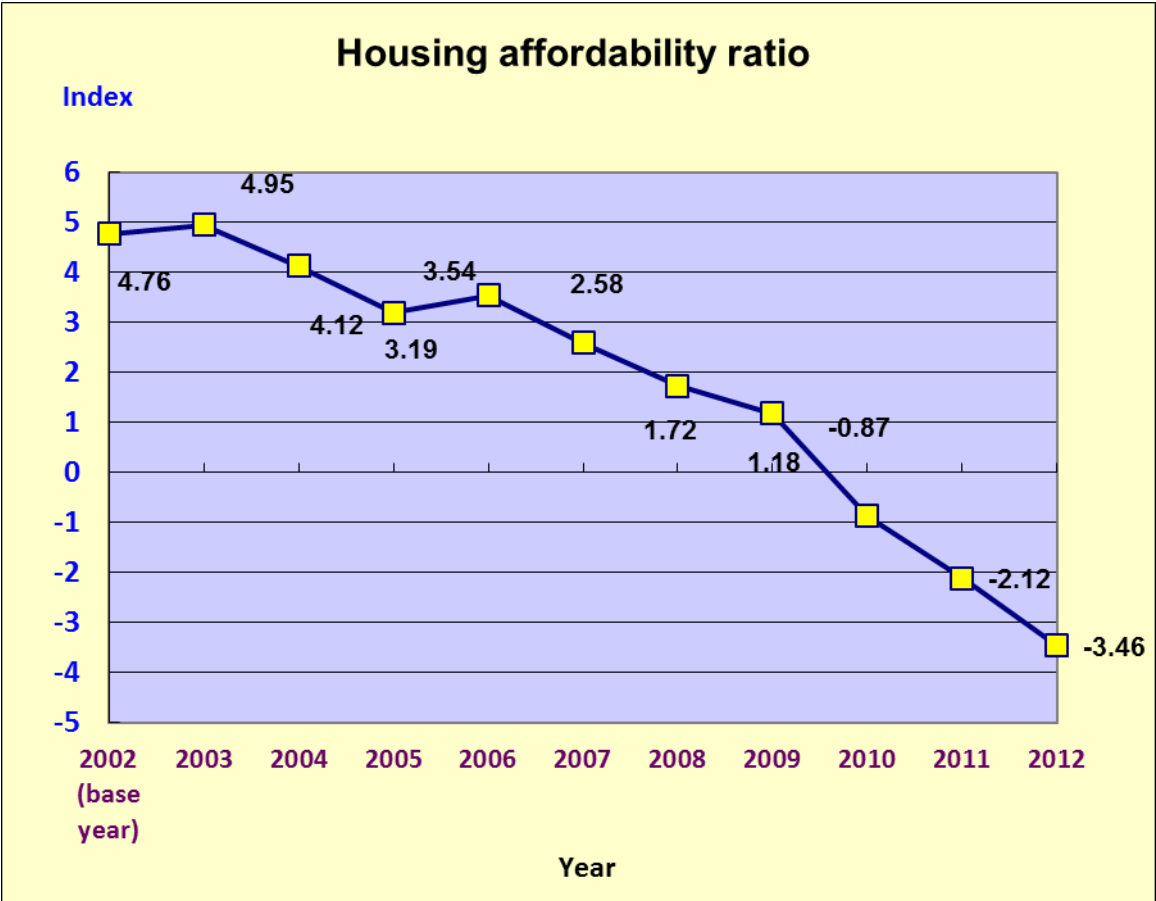
### Appendix 3.1: Line Charts of CUHK Hong Kong Quality of Life Index and Sub-indices

The higher the rate, the better performance for the indicator

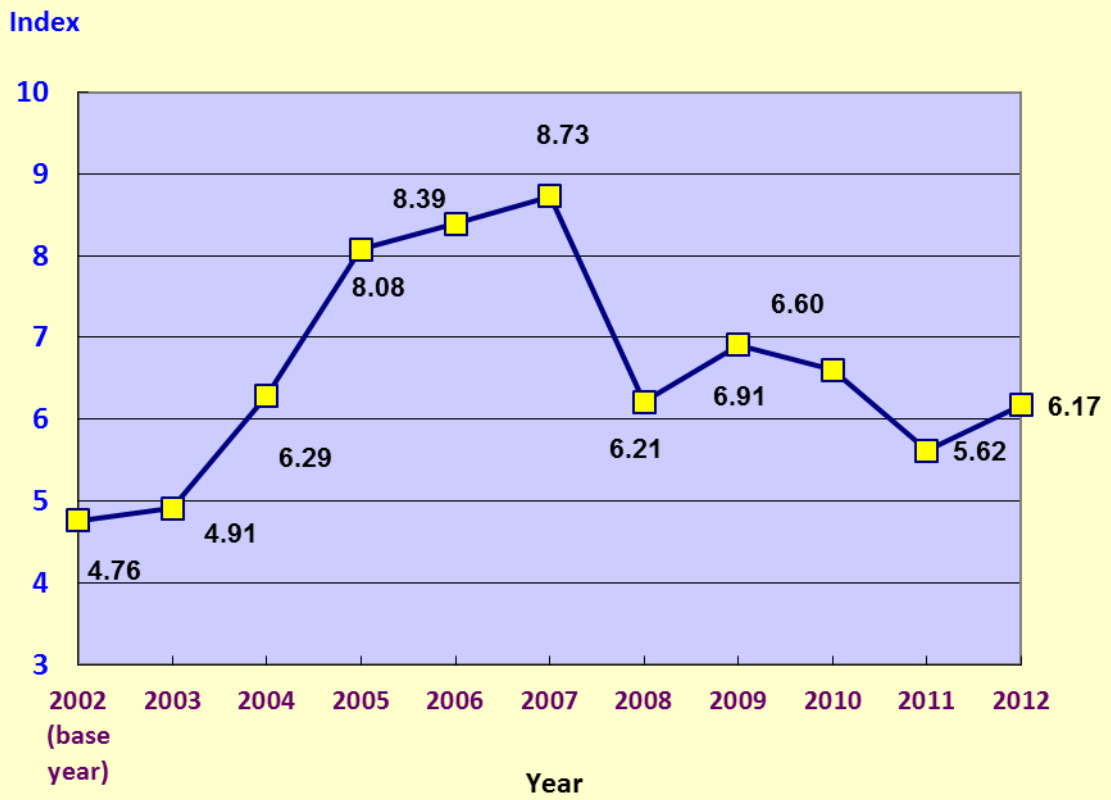




**Appendix 3.2: Line Charts of Selected Index**



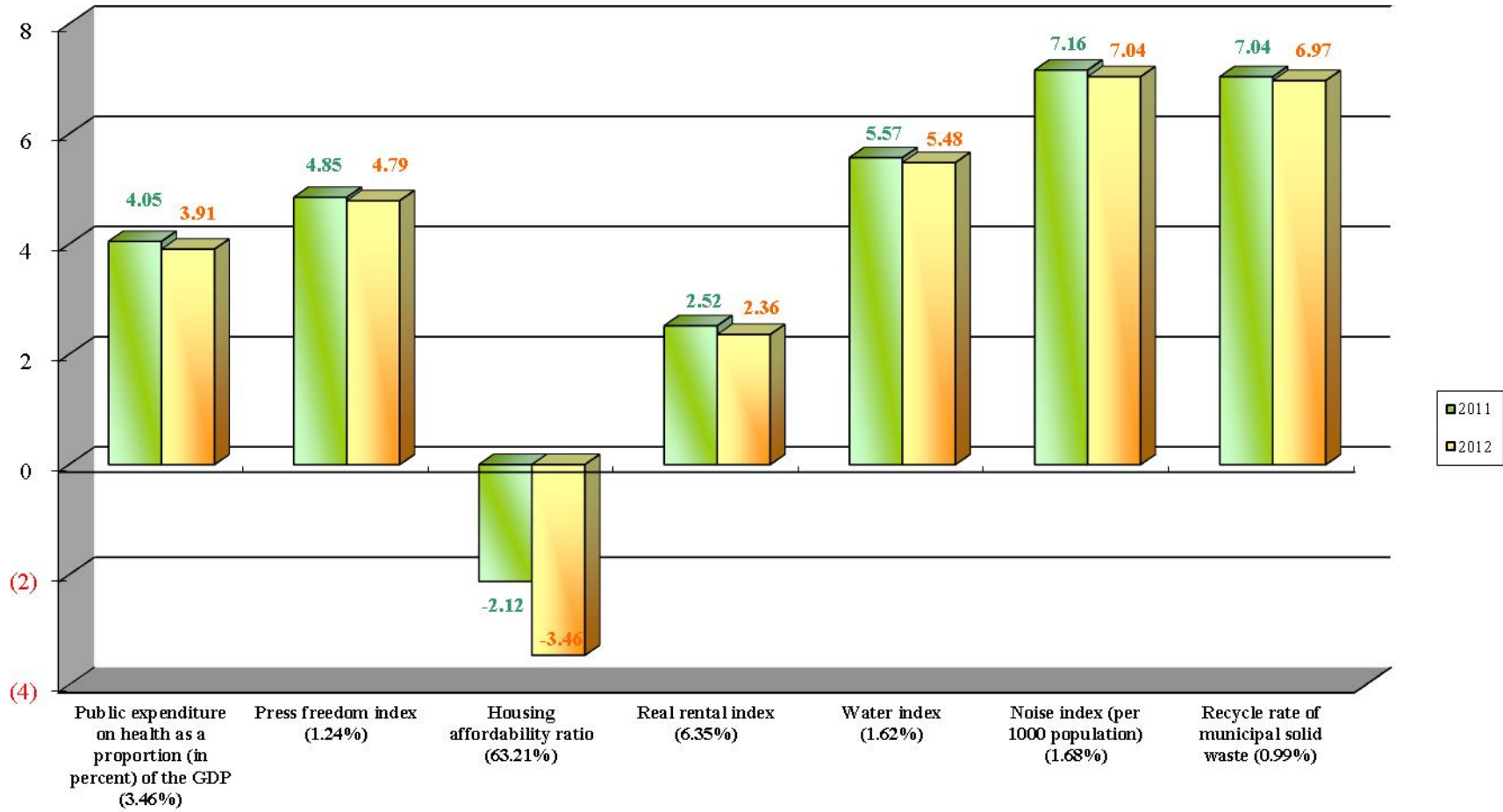
## Government performance index



**Appendix 4**

**2011-2012 Quality of Life Indices  
Worse Indices**

Quality of Life Index

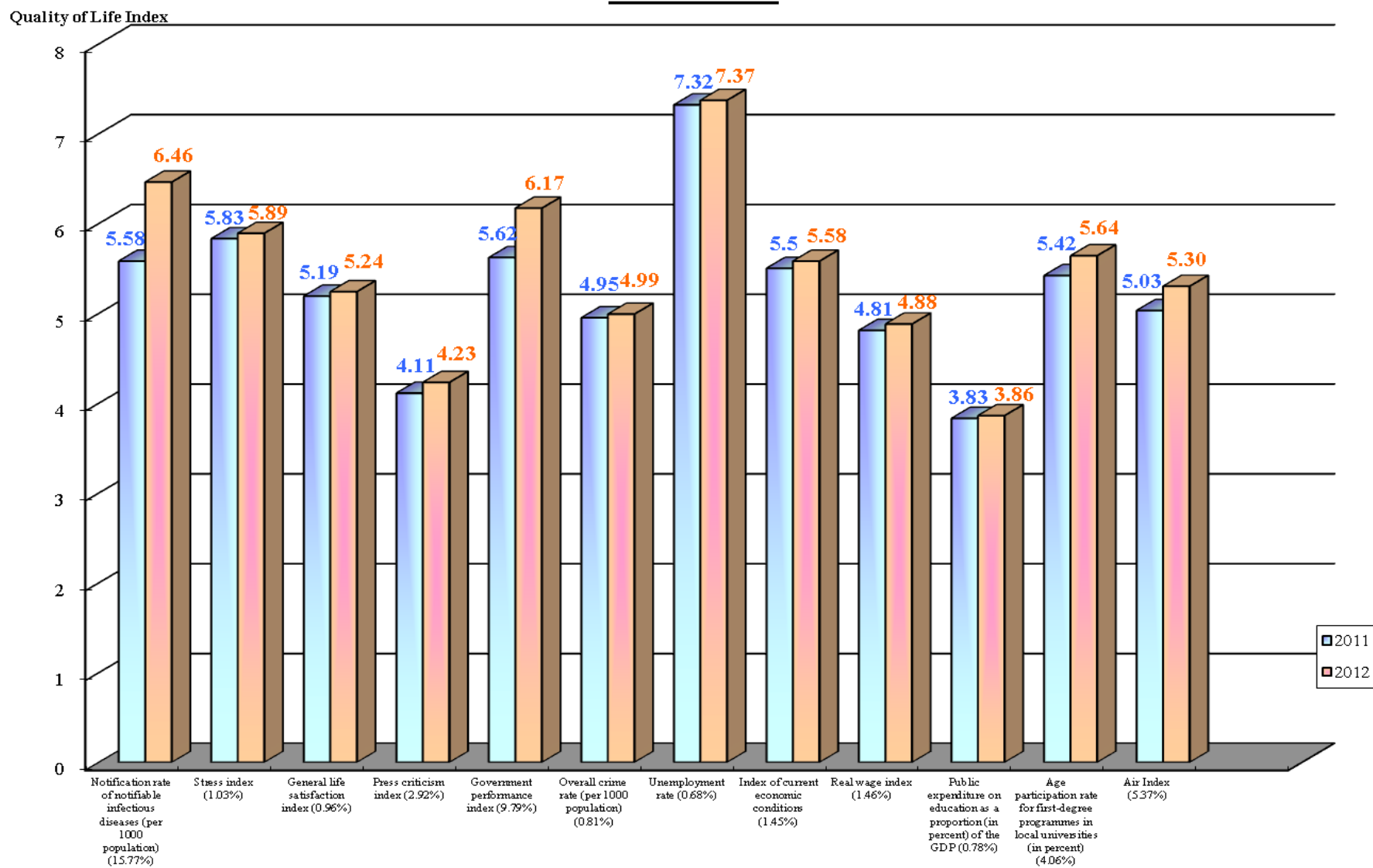


( ) % decrease between 11 and 12



**Appendix 5**

**2011-2012 Quality of Life Indices**  
**Better Indices**



( ) % increase between 11 and 12

## **Working Group of the CUHK Hong Kong Quality of Life Index**

Prof. Ng Sai Leung  
Director, Centre for Quality of Life  
Associate Professor,  
Department of Geography and Resource  
Management, CUHK  
Tel: 3943-6527  
Email: [slng@cuhk.edu.hk](mailto:slng@cuhk.edu.hk)

Prof. Ting Kwok Fai  
Professor,  
Department of Sociology, CUHK  
Tel: 3943-6626  
Email: [kfting@cuhk.edu.hk](mailto:kfting@cuhk.edu.hk)

Prof. Ng Kai Hon  
Assistant Professor,  
Department of Government and Public  
Administration, CUHK  
Tel: 3943-7486  
Email: [kaihongng@cuhk.edu.hk](mailto:kaihongng@cuhk.edu.hk)

Prof. Sunny K.S. Kwong  
Associate Professor,  
Department of Economics, CUHK  
Tel: 3943-8198  
Email: [kaisunkwong@cuhk.edu.hk](mailto:kaisunkwong@cuhk.edu.hk)

Prof. Paul S.N. Lee  
Dean, Faculty of Social Science  
Professor, School of Journalism and  
Communication, CUHK  
Tel: 3943-6234  
Email: [plee@cuhk.edu.hk](mailto:plee@cuhk.edu.hk)

Prof. Winnie W.S. Mak  
Associate Professor,  
Department of Psychology, CUHK  
Tel: 3943-6577  
Email: [wsmak@psy.cuhk.edu.hk](mailto:wsmak@psy.cuhk.edu.hk)

Prof. Tsou Jin Yeu  
Professor,  
School of Architecture, CUHK  
Tel: 3943-6558  
Email: [jinyeutsou@cuhk.edu.hk](mailto:jinyeutsou@cuhk.edu.hk)

Prof. Chong Tai Leung  
Associate Professor,  
Department of Economics, CUHK  
Tel: 3943-8193  
Email: [chong2064@cuhk.edu.hk](mailto:chong2064@cuhk.edu.hk)

Prof. Wong Hung  
Associate Professor,  
Department of Social Work, CUHK  
Tel: 3943-7510  
Email: [hwong@cuhk.edu.hk](mailto:hwong@cuhk.edu.hk)

Prof. Donna S.C. Chu  
Associate Professor,  
School of Journalism and  
Communication, CUHK  
Tel: 3943-1908  
Email: [donnachu@cuhk.edu.hk](mailto:donnachu@cuhk.edu.hk)