

## Appendix 1: CUHK Hong Kong Quality of Life Index<sup>Note1</sup>

	2002 (Base year)	2003	2004	2005	2006	2007	2008	2009	2010	2010 compared with 2009
<b>Social sub-index</b>										
1. Standardized mortality rate (per 1000 standard population)	4.76	4.63	4.63	4.76	5.02	5.02	5.02	5.15	5.15#	Same
2. Life expectancy at birth (in year)	4.76	4.75	4.78	4.77	4.81	4.81	4.81	4.83	4.84#	Better
3. Public expenditure on health as a proportion (in percent) of the GDP	4.76	4.76	4.76	4.05	3.70	3.88	3.53	4.05	3.88	Worse
4. Notification rate of notifiable infectious diseases (per 1000 population)	4.76	6.55	5.83	5.81	5.35	4.86	6.48	0.78 Note2	5.67 Note3	Better
5. Stress index	4.76	5.30	5.74	6.05	5.98	6.05	5.69	5.71	5.92	Better
6. General life satisfaction index	4.76	4.79	5.03	5.23	5.35	5.25	5.12	5.31	5.31	Same
7. Press freedom index	4.76	4.82	4.77	4.83	4.83	4.95	4.93	4.93	4.87	Worse
8. Press criticism index	4.76	4.94	4.33	3.75	3.68	3.90	3.98	3.77	3.96	Better
9. Government performance index	4.76	4.91	6.29	8.08	8.39	8.73	6.21	6.91	6.60	Worse
10. Overall crime rate (per 1000 population)	4.76	3.99	4.49	4.68	4.48	4.55	4.73	4.80	4.94	Better
<b>Social sub-index</b>	<b>47.62</b>	<b>49.44</b>	<b>50.65</b>	<b>52.01</b>	<b>51.59</b>	<b>52.00</b>	<b>50.5</b>	<b>46.24</b>	<b>51.14</b>	<b>Better</b>
<b>Economic sub-index</b>										
11. Housing affordability ratio	4.76	4.95	4.12	3.19	3.54	2.58	1.72	1.18	-0.87	Worse
12. Real rental index	4.76	5.21	4.95	4.20	4.00	3.51	2.98	3.87	2.94	Worse
13. Unemployment rate	4.76	4.38	5.14	5.92	6.48	6.98	7.13	6.17	6.80	Better
14. Index of current economic conditions	4.76	5.06	6.22	6.82	6.81	7.26	5.07	5.19	5.98	Better
15. Real wage index	4.76	4.77	4.71	4.69	4.68	4.70	4.73	4.71	4.68	Worse
16. Public expenditure on education as a proportion (in percent) of the GDP	4.76	4.99	4.99	4.53	4.41	4.06	3.95	5.22	3.83	Worse
17. Age participation rate for first-degree programmes and postgraduate programmes in local universities (in percent)	4.76	4.94	4.89	4.92	5.17	5.22	5.17	5.17	5.17	Same
<b>Economic sub-index</b>	<b>33.32</b>	<b>34.30</b>	<b>35.02</b>	<b>34.27</b>	<b>35.09</b>	<b>34.31</b>	<b>30.75</b>	<b>31.51</b>	<b>28.53</b>	<b>Worse</b>
<b>Environmental sub-index</b>										
18. Air index	4.76	4.45	4.51	4.94	4.88	4.87	4.97	5.23	5.18	Worse
19. Water index	4.76	4.84	5.01	5.16	5.17	5.16	5.23	5.21	5.52*	Better
20. Noise index (per 1000 population)	4.76	5.82	5.30	6.31	6.22	6.54	6.74	6.87	7.02	Better
21. Recycle rate of municipal solid waste	4.76	5.35	5.29	5.65	5.98	5.90	6.24	6.46	6.79*	Better
<b>Environmental sub-index</b>	<b>19.04</b>	<b>20.46</b>	<b>20.11</b>	<b>22.06</b>	<b>22.25</b>	<b>22.47</b>	<b>23.18</b>	<b>23.77</b>	<b>24.51</b>	<b>Better</b>
<b>Quality of Life index</b>	<b>100.00</b>	<b>104.20</b>	<b>105.78</b>	<b>108.34</b>	<b>108.93</b>	<b>108.78</b>	<b>104.43</b>	<b>101.52</b>	<b>104.18</b>	<b>Better</b>

Note1 The higher the score, the better the performance of the indicator.

Note2 The plunge was largely due to the Swine Influenza has been listed as notifiable disease since 27 April 2009.

Note3 Swine Influenza has been removed from the list of Statutory notifiable infections diseases since 8 October 2010.

\* Forecasted figure

# Provisional figure

Revised figure

## **Appendix 2: Composition of and Data for Compiling the CUHK Hong Kong Quality of Life Index**

### **SOCIAL SUB-INDEX**

1. Standardized mortality rate (per 1000 standard population)<sup>(1)</sup> refers to the number of deaths per 1000 standard population.
2. Life expectancy at birth (in years) refers to the life expectancy at birth for males and females.
3. Public expenditure on health as a proportion (in percent) of the GDP.
4. Notification rate of notifiable infectious diseases (per 1000 population) refers to the number of notified infectious diseases per 1000 population.
5. Stress index refers to the stress that the Hong Kong people are facing (base rate = 100).
6. General life satisfaction index refers to the degree of satisfaction of Hong Kong people with their current lives (base rate = 100).
7. Press freedom index refers to the degree of press freedom in Hong Kong (base rate = 100).
8. Press criticism index refers to the frequency of criticisms by the press of the Hong Kong Corporation, the Hong Kong SAR Government, and the People's Republic of China Government (base rate = 100).
9. Government performance index refers to the degree of satisfaction of Hong Kong people with the performance of Hong Kong SAR Government (base rate = 100).
10. Overall crime rate (per 1000 population) refers to the total number of violent and non-violent crimes reported per 1000 population.

### **ECONOMIC SUB-INDEX**

11. Housing affordability ratio refers to the annual average of affordable property price (i.e. average property price times 39.9 sq. feet, divided by monthly medium income times 12).
12. Real rental index refers to the real rental index for the Hong Kong property market.
13. Unemployment rate refers to the seasonally adjusted unemployment rate (in percent).
14. Index of current economic conditions refers to the public attitude towards economic conditions in Hong Kong.
15. Real wage index<sup>(2)</sup> refers to the real wages for employees up to supervisory level (excluding managerial and professional employees) in all selected industry sectors.
16. Public expenditure on education as a proportion (in percent) of the GDP.
17. Age participation rate for first-degree programmes and postgraduate programmes in local universities (in percent).

### **ENVIRONMENTAL SUB-INDEX**

18. Air index refers to the daily air pollution index.
19. Water index refers to the percentage of rivers in Hong Kong categorized as 'good' and 'excellent' by the monitoring station.
20. Noise index (per 1000 population) refers to the number of noise complaints received by the Environmental Protection Department and the Police per 1000 population.
21. Recycle rate of municipal solid waste refers to the recycle rate (in percent) of solid waste from households and from commercial and industrial sources.

#### **Notes:**

<sup>(1)</sup> Standardized mortality rate is compiled based on the world standard population published in the 1997-1999 *World Health Statistics Annual*.

<sup>(2)</sup> As from 2001, the real wage index is derived by deflating the nominal wage indices by the 1999/2000-based CPI(A).

#### **Sources:**

Stress index, general life satisfaction index, press freedom index, press criticism index, government performance index and index of current economic conditions are compiled by the Faculty of Social Science of The Chinese University of Hong Kong, based on data collected by surveys conducted by the Hong Kong Institute of Asia-Pacific Studies of The Chinese University of Hong Kong. All other indices are obtained from the government and related institutions.

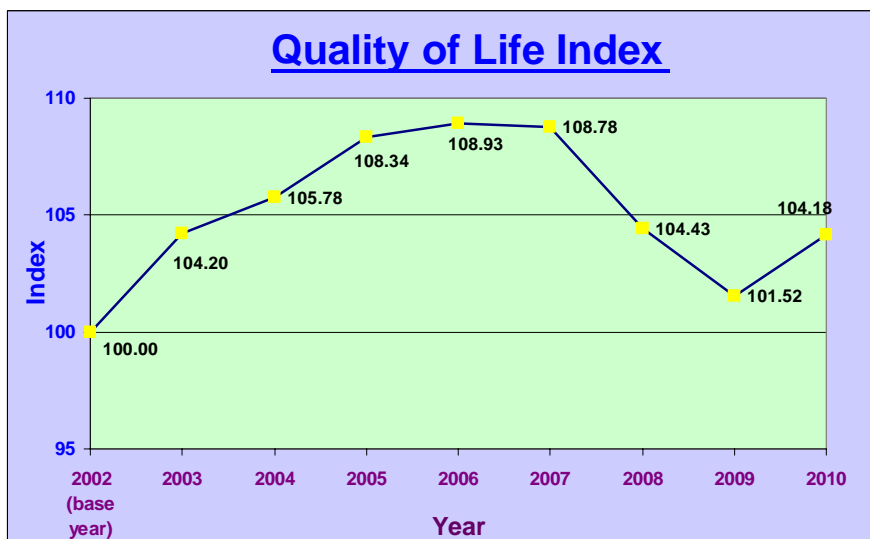
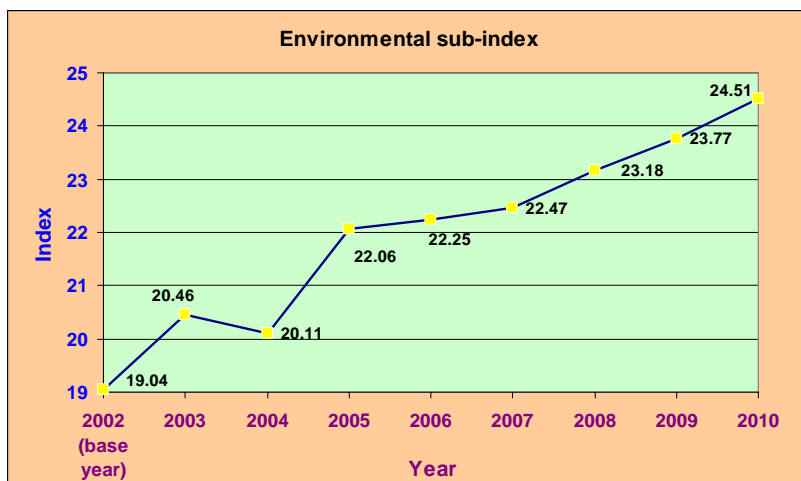
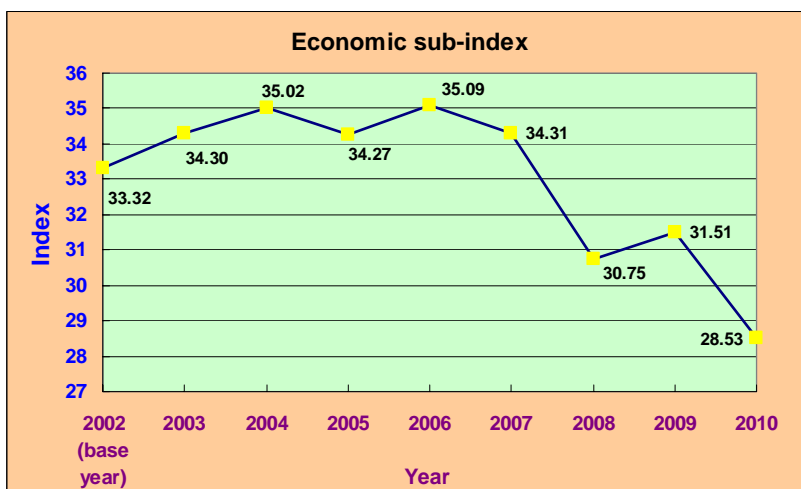
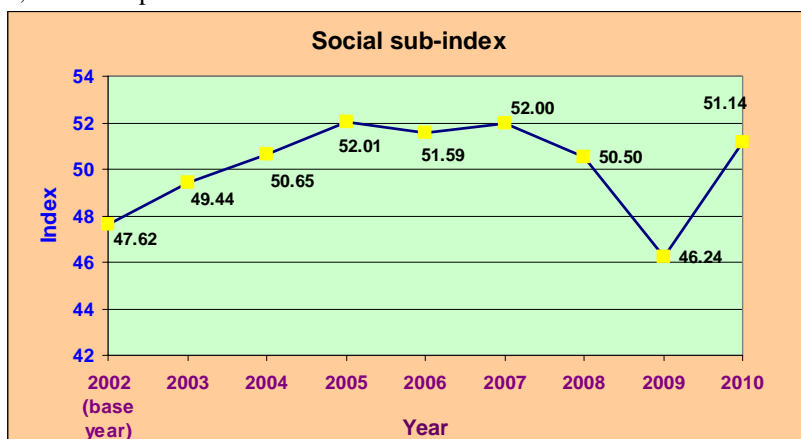
## Data for Compiling the CUHK Hong Kong Quality of Life Index

	2002	2003	2004	2005	2006	2007	2008	2009	2010
<b>Social sub-index</b>									
1. Standardized mortality rate (per 1000 standard population)	3.70	3.80	3.80	3.70	3.50	3.50	3.50	3.40	3.40#
2. Life expectancy at birth (in years)	F : 84.5 M : 78.6	F : 84.3 M : 78.5	F : 84.7 M : 79	F: 84.6 M: 78.8	F: 85.5 M: 79.4	F: 85.5 M: 79.4	F: 85.5 M: 79.3	F: 85.9 M: 79.7	F: 85.9# M: 80.0#
3. Public expenditure on health as a proportion (in percent) of the GDP	2.70	2.70	2.70	2.30	2.10	2.20	2.00	2.30	2.20
4. Notification rate of notifiable infectious diseases (per 1000 population)	3.73	2.33	2.89	2.91	3.27	3.65	2.38	6.85	3.02
5. Stress index	100.00	88.75	79.51	72.95	74.42	72.91	80.36	80.00	75.53
6. General life satisfaction index	100.00	100.68	105.62	109.94	112.47	110.22	107.57	111.66	111.46
7. Press freedom index	100.00	101.22	100.26	101.43	101.55	103.92	103.64	103.54	102.30
8. Press criticism index	100.00	103.75	91.02	78.82	77.25	81.86	83.65	79.15	83.10
9. Government performance index	100.00	103.23	132.23	169.79	176.29	183.48	130.48	145.10	138.62
10. Overall crime rate (per 1000 population)	11.18	12.99	11.81	11.37	11.83	11.67	11.25	11.08	10.76
<b>Economic sub-index</b>									
11. Housing affordability ratio	4.68	4.49	5.31	6.22	5.88	6.82	7.67	8.20	10.22
12. Real rental index	87.97	79.67	84.55	93.11	96.68	105.27	114.54	98.99	115.38
13. Unemployment rate	7.34	7.93	6.76	5.55	4.69	3.92	3.68	5.17	4.20
14. Index of current economic conditions	76.55	81.32	99.95	109.75	109.48	116.70	81.55	83.40	96.22
15. Real wage index	117.53	117.70	116.35	115.78	115.48	116.08	116.68	116.30	115.45
16. Public expenditure on education as a proportion (in percent) of the GDP	4.10	4.40	4.40	4.00	3.80	3.50	3.40	4.50	3.30
17. Age participation rate for first-degree programmes and postgraduate programmes in local universities (in percent)	17.04	17.70	17.50	17.60	18.50	18.70	18.50	18.50	18.50
<b>Environmental sub-index</b>									
18. Air index	46.90	49.93	49.32	45.10	45.68	45.77	44.83	42.26	42.78
19. Water index	74.40	75.60	78.30	80.80	80.80	80.70	81.70	81.40	86.33*
20. Noise index (per 1000 population)	1.84	1.43	1.63	1.24	1.28	1.15	1.07	1.02	0.97
21. Recycle rate of municipal solid waste	36.30	40.82	40.35	43.09	45.59	44.96	47.58	49.30	51.81*

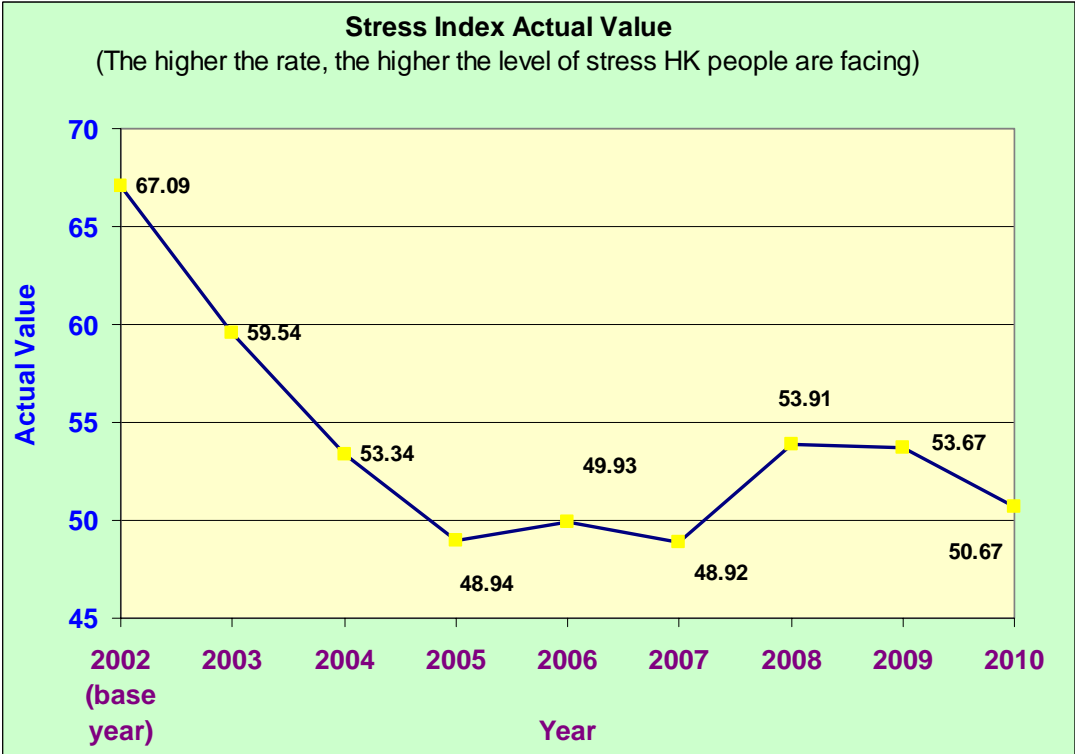
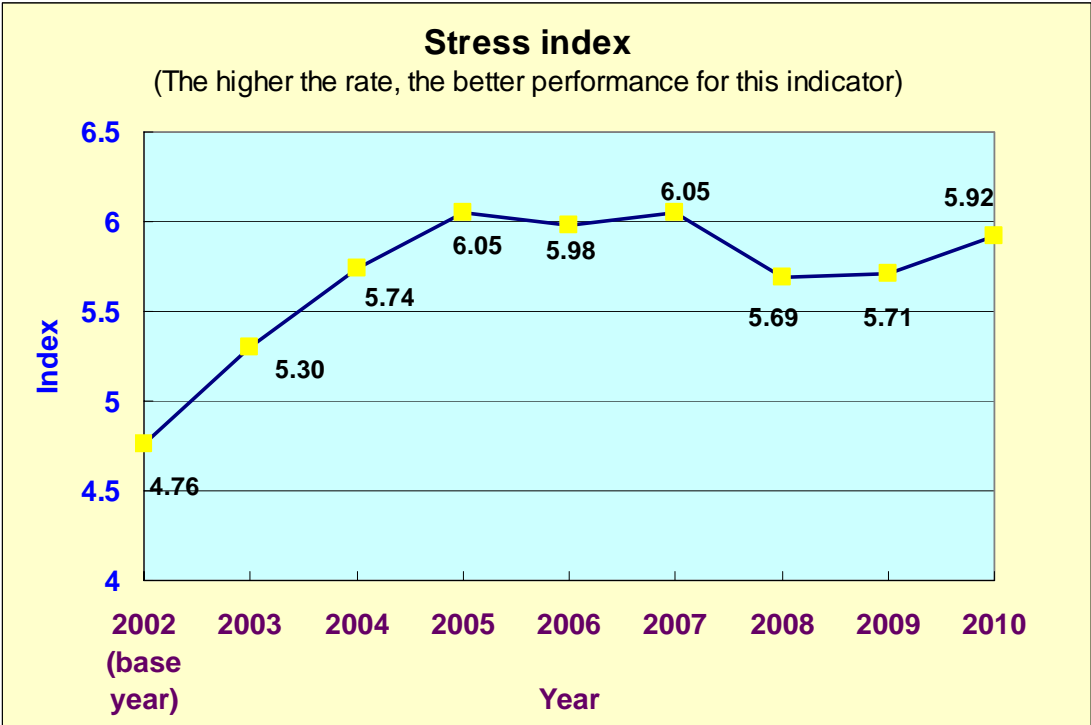
\* Forecasted figure  
# Provisional figure  
■ Revised figure

### Appendix 3.1: Line Charts of CUHK Hong Kong Quality of Life Index and Sub-indices

The higher the rate, the better performance for the indicator

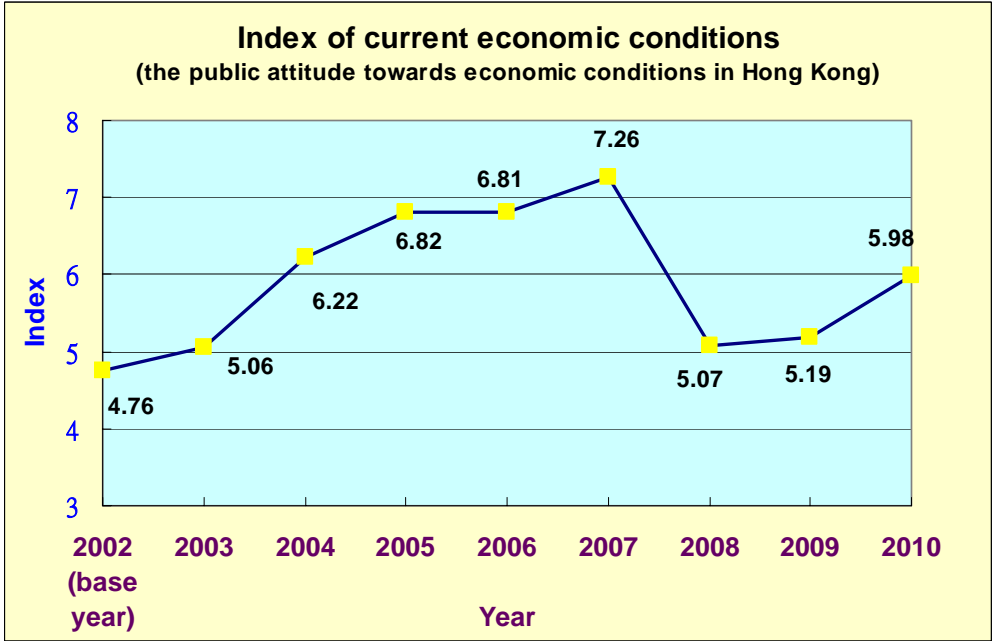
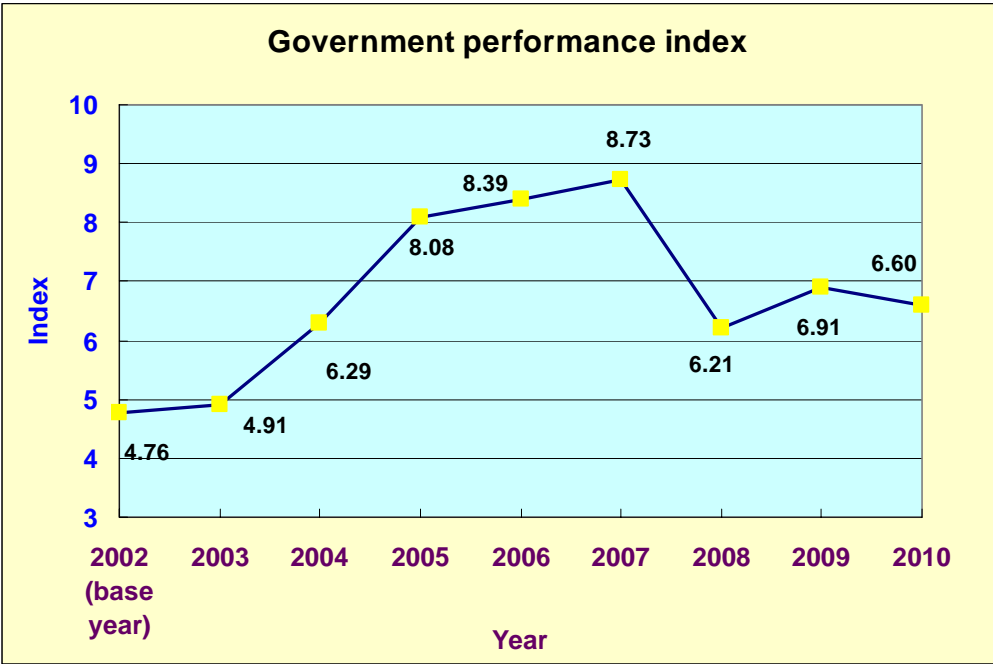


**Appendix 3.2: Line Charts of Selected Index (Stress Index)**



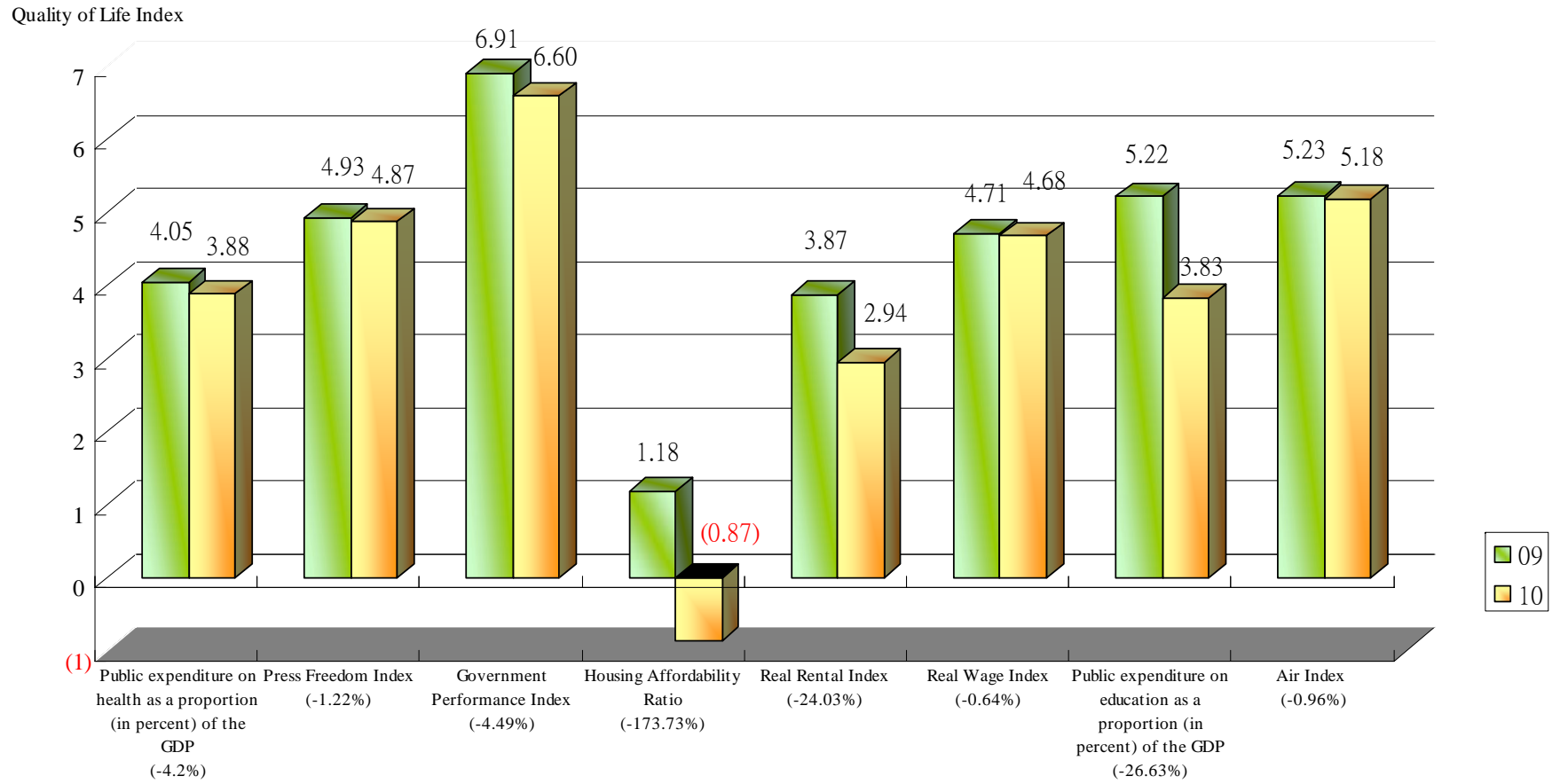
**Appendix 3.3: Line Charts of Selected Indices (Government Performance Index and Index of Current Economic Conditions)**

The higher the rate, the better performance for the indicator



**Appendix 4**

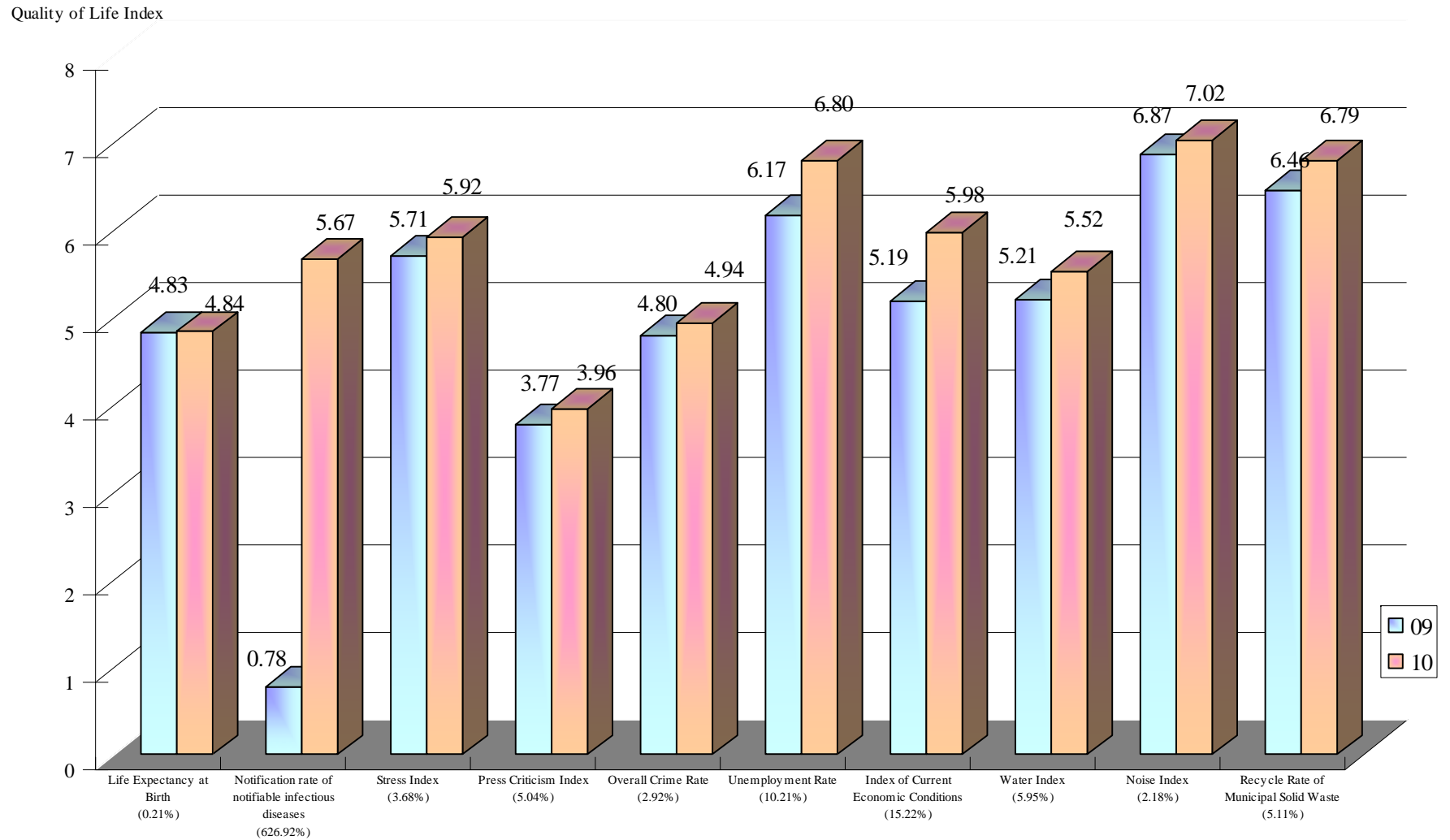
**2009-2010 Quality of Life Indices**  
**Worse Indices**



( ) % decrease between 09 and 10

**Appendix 5**

**2009-2010 Quality of Life Indices**  
**Better Indices**



( ) % increase between 09 and 10



## **Working Group of the CUHK Hong Kong Quality of Life Index**

Prof. Ng Sai Leung  
Director, Centre for Quality of Life  
Associate Professor,  
Department of Geography and Resource  
Management, CUHK  
Tel: 3943-6527  
Email: [slng@cuhk.edu.hk](mailto:slng@cuhk.edu.hk)

Prof. Winnie W.S. Mak  
Associate Professor,  
Department of Psychology, CUHK  
Tel: 3943-6577  
Email: [wsmak@psy.cuhk.edu.hk](mailto:wsmak@psy.cuhk.edu.hk)

Prof. Ting Kwok Fai  
Professor,  
Department of Sociology, CUHK  
Tel: 3943-6626  
Email: [kfting@cuhk.edu.hk](mailto:kfting@cuhk.edu.hk)

Prof. Ma Ngok  
Associate Professor,  
Department of Government and Public  
Administration, CUHK  
Tel: 3943-7483  
Email: [mangok@cuhk.edu.hk](mailto:mangok@cuhk.edu.hk)

Prof. Ng Kai Hon  
Assistant Professor,  
Department of Government and Public  
Administration, CUHK  
Tel.: 3943-7486  
Email: [kaihongng@cuhk.edu.hk](mailto:kaihongng@cuhk.edu.hk)

Prof. Tsou Jin Yeu  
Professor,  
School of Architecture, CUHK  
Tel: 3943-6558  
Email: [jinyeutsou@cuhk.edu.hk](mailto:jinyeutsou@cuhk.edu.hk)

Prof. Sunny K.S. Kwong  
Associate Professor,  
Department of Economics, CUHK  
Tel: 3943-8198  
Email: [kaisunkwong@cuhk.edu.hk](mailto:kaisunkwong@cuhk.edu.hk)

Prof. Chong Tai Leung  
Associate Professor,  
Department of Economics, CUHK  
Tel: 3943-8193  
Email: [chong2064@cuhk.edu.hk](mailto:chong2064@cuhk.edu.hk)

Prof. Paul S.N. Lee  
Dean, Faculty of Social Science  
Professor, School of Journalism and  
Communication, CUHK  
Tel: 3943-6234  
Email: [plee@cuhk.edu.hk](mailto:plee@cuhk.edu.hk)