

Appendix 1: CUHK Hong Kong Quality of Life Index^{Note1}

| | 2002 (Base year) | 2003 | 2004 | 2005 | 2006 | 2007 | 2008 | 2009 | 2010 | 2011 | 2011 compared with 2010 |
|---|------------------------|---------------|---------------|---------------|---------------|---------------|---------------|---------------|---------------|---------------|-------------------------------|
| Social sub-index | | | | | | | | | | | |
| 1. Standardized mortality rate (per 1000 standard population) | 4.76 | 4.63 | 4.63 | 4.76 | 5.02 | 5.02 | 5.02 | 5.15 | 5.15 | 5.4# | Better |
| 2. Life expectancy at birth (in year) | 4.76 | 4.75 | 4.78 | 4.77 | 4.81 | 4.81 | 4.81 | 4.83 | 4.85 | 4.88# | Better |
| 3. Public expenditure on health as a proportion (in percent) of the GDP | 4.76 | 4.76 | 4.76 | 4.05 | 3.70 | 3.88 | 3.53 | 4.05 | 3.88 | 4.05 | Better |
| 4. Notification rate of notifiable infectious diseases (per 1000 population) | 4.76 | 6.55 | 5.83 | 5.81 | 5.35 | 4.86 | 6.48 | 0.78 | 5.67 | 5.58 | Worse |
| 5. Stress index | 4.76 | 5.30 | 5.74 | 6.05 | 5.98 | 6.05 | 5.69 | 5.71 | 5.92 | 5.83 | Worse |
| 6. General life satisfaction index | 4.76 | 4.79 | 5.03 | 5.23 | 5.35 | 5.25 | 5.12 | 5.31 | 5.31 | 5.19 | Worse |
| 7. Press freedom index | 4.76 | 4.82 | 4.77 | 4.83 | 4.83 | 4.95 | 4.93 | 4.93 | 4.87 | 4.85 | Worse |
| 8. Press criticism index | 4.76 | 4.94 | 4.33 | 3.75 | 3.68 | 3.90 | 3.98 | 3.77 | 3.96 | 4.11 | Better |
| 9. Government performance index | 4.76 | 4.91 | 6.29 | 8.08 | 8.39 | 8.73 | 6.21 | 6.91 | 6.60 | 5.62 | Worse |
| 10. Overall crime rate (per 1000 population) | 4.76 | 3.99 | 4.49 | 4.68 | 4.48 | 4.55 | 4.73 | 4.80 | 4.94 | 4.97 | Better |
| Social sub-index | 47.62 | 49.44 | 50.65 | 52.01 | 51.59 | 52.00 | 50.5 | 46.24 | 51.15 | 50.48 | Worse |
| Economic sub-index | | | | | | | | | | | |
| 11. Housing affordability ratio | 4.76 | 4.95 | 4.12 | 3.19 | 3.54 | 2.58 | 1.72 | 1.18 | -0.87 | -2.12 | Worse |
| 12. Real rental index | 4.76 | 5.21 | 4.95 | 4.20 | 4.00 | 3.51 | 2.98 | 3.87 | 2.94 | 2.52 | Worse |
| 13. Unemployment rate | 4.76 | 4.38 | 5.14 | 5.92 | 6.48 | 6.98 | 7.13 | 6.17 | 6.80 | 7.32 | Better |
| 14. Index of current economic conditions | 4.76 | 5.06 | 6.22 | 6.82 | 6.81 | 7.26 | 5.07 | 5.19 | 5.98 | 5.50 | Worse |
| 15. Real wage index | 4.76 | 4.77 | 4.71 | 4.69 | 4.68 | 4.70 | 4.73 | 4.71 | 4.68 | 4.81 | Better |
| 16. Public expenditure on education as a proportion (in percent) of the GDP | 4.76 | 4.99 | 4.99 | 4.53 | 4.41 | 4.06 | 3.95 | 5.22 | 3.83 | 3.83 | Same |
| 17. Age participation rate for first-degree programmes in local universities (in percent) | 4.76 | 4.94 | 4.89 | 4.92 | 5.17 | 5.22 | 5.17 | 5.17 | 5.22 | 5.42 | Better |
| Economic sub-index | 33.32 | 34.30 | 35.02 | 34.27 | 35.09 | 34.31 | 30.75 | 31.51 | 28.58 | 27.28 | Worse |
| Environmental sub-index | | | | | | | | | | | |
| 18. Air index | 4.76 | 4.45 | 4.51 | 4.94 | 4.88 | 4.87 | 4.97 | 5.23 | 5.18 | 5.03 | Worse |
| 19. Water index | 4.76 | 4.84 | 5.01 | 5.16 | 5.17 | 5.16 | 5.23 | 5.21 | 5.39 | 5.57* | Better |
| 20. Noise index (per 1000 population) | 4.76 | 5.82 | 5.30 | 6.31 | 6.22 | 6.54 | 6.74 | 6.87 | 7.02 | 7.16 | Better |
| 21. Recycle rate of municipal solid waste | 4.76 | 5.35 | 5.29 | 5.65 | 5.98 | 5.90 | 6.24 | 6.46 | 6.81 | 7.04* | Better |
| Environmental sub-index | 19.04 | 20.46 | 20.11 | 22.06 | 22.25 | 22.47 | 23.18 | 23.77 | 24.40 | 24.80 | Better |
| Quality of Life index | 100.00 | 104.20 | 105.78 | 108.34 | 108.93 | 108.78 | 104.43 | 101.52 | 104.13 | 102.56 | Worse |

Note1 The higher the score, the better the performance of the indicator.

* Forecasted figure

Provisional figure

■ Revised figure

Appendix 2: Composition of and Data for Compiling the CUHK Hong Kong Quality of Life Index

SOCIAL SUB-INDEX

1. Standardized mortality rate (per 1000 standard population)⁽¹⁾ refers to the number of deaths per 1000 standard population.
2. Life expectancy at birth (in years) refers to the life expectancy at birth for males and females.
3. Public expenditure on health as a proportion (in percent) of the GDP.
4. Notification rate of notifiable infectious diseases (per 1000 population) refers to the number of notified infectious diseases per 1000 population.
5. Stress index refers to the stress that the Hong Kong people are facing (base rate = 100).
6. General life satisfaction index refers to the degree of satisfaction of Hong Kong people with their current lives (base rate = 100).
7. Press freedom index refers to the degree of press freedom in Hong Kong (base rate = 100).
8. Press criticism index refers to the frequency of criticisms by the press of the Hong Kong Corporation, the Hong Kong SAR Government, and the People's Republic of China Government (base rate = 100).
9. Government performance index refers to the degree of satisfaction of Hong Kong people with the performance of Hong Kong SAR Government (base rate = 100).
10. Overall crime rate (per 1000 population) refers to the total number of violent and non-violent crimes reported per 1000 population.

ECONOMIC SUB-INDEX

11. Housing affordability ratio refers to the annual average of affordable property price (i.e. average property price times 39.9 sq. feet, divided by monthly medium income times 12).
12. Real rental index refers to the real rental index for the Hong Kong property market.
13. Unemployment rate refers to the seasonally adjusted unemployment rate (in percent).
14. Index of current economic conditions refers to the public attitude towards economic conditions in Hong Kong.
15. Real wage index⁽²⁾ refers to the real wages for employees up to supervisory level (excluding managerial and professional employees) in all selected industry sectors.
16. Public expenditure on education as a proportion (in percent) of the GDP.
17. Age participation rate for first-degree programmes in local universities (in percent).

ENVIRONMENTAL SUB-INDEX

18. Air index refers to the daily air pollution index.
19. Water index refers to the percentage of rivers in Hong Kong categorized as 'good' and 'excellent' by the monitoring station.
20. Noise index (per 1000 population) refers to the number of noise complaints received by the Environmental Protection Department and the Police per 1000 population.
21. Recycle rate of municipal solid waste refers to the recycle rate (in percent) of solid waste from households and from commercial and industrial sources.

Notes:

- ⁽¹⁾ Standardized mortality rate is compiled based on the world standard population published in the 1997-1999 *World Health Statistics Annual*.
- ⁽²⁾ The real wage index is derived by deflating the nominal wage indices by the CPI(A).

Sources:

Stress index, general life satisfaction index, press freedom index, press criticism index, government performance index and index of current economic conditions are compiled by the Faculty of Social Science of The Chinese University of Hong Kong. All other indices are obtained from the government and related institutions.

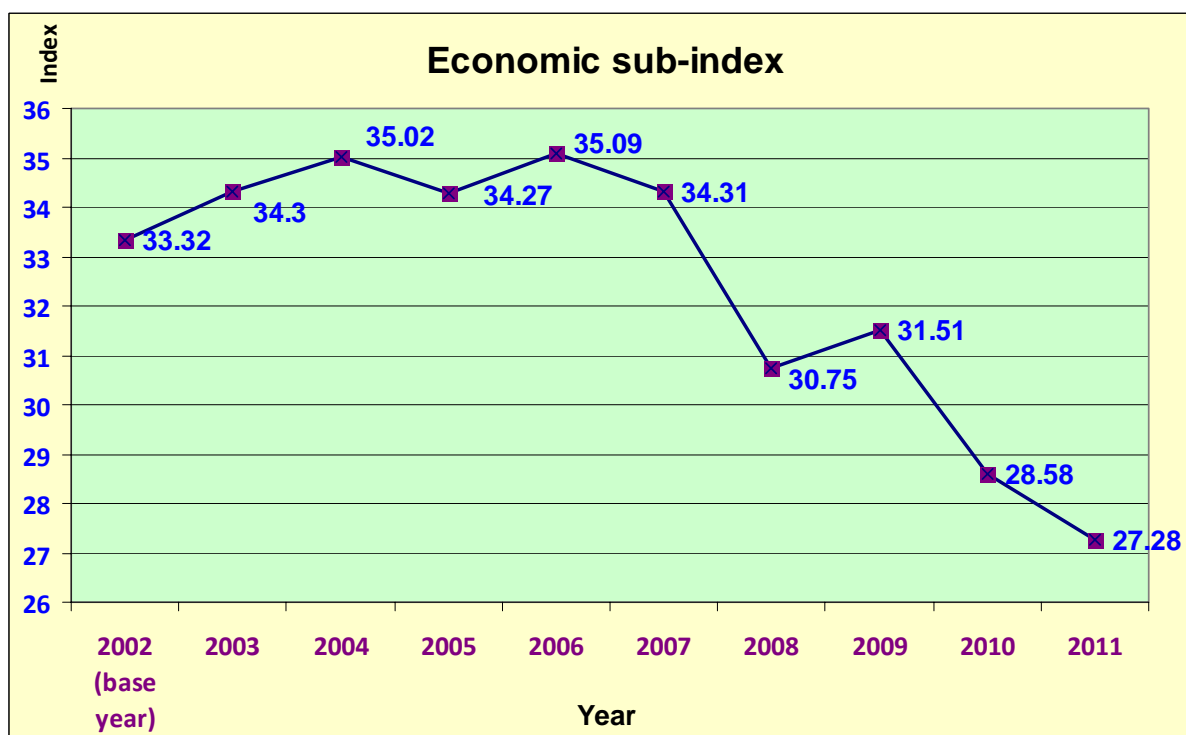
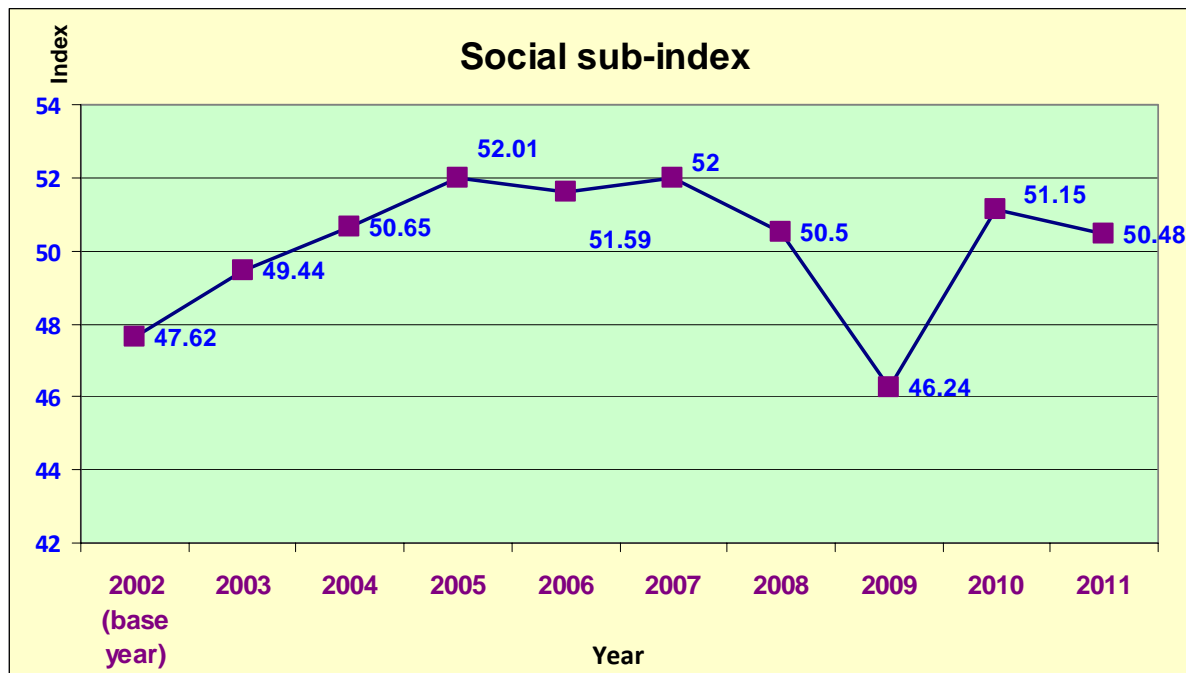
Data for Compiling the CUHK Hong Kong Quality of Life Index

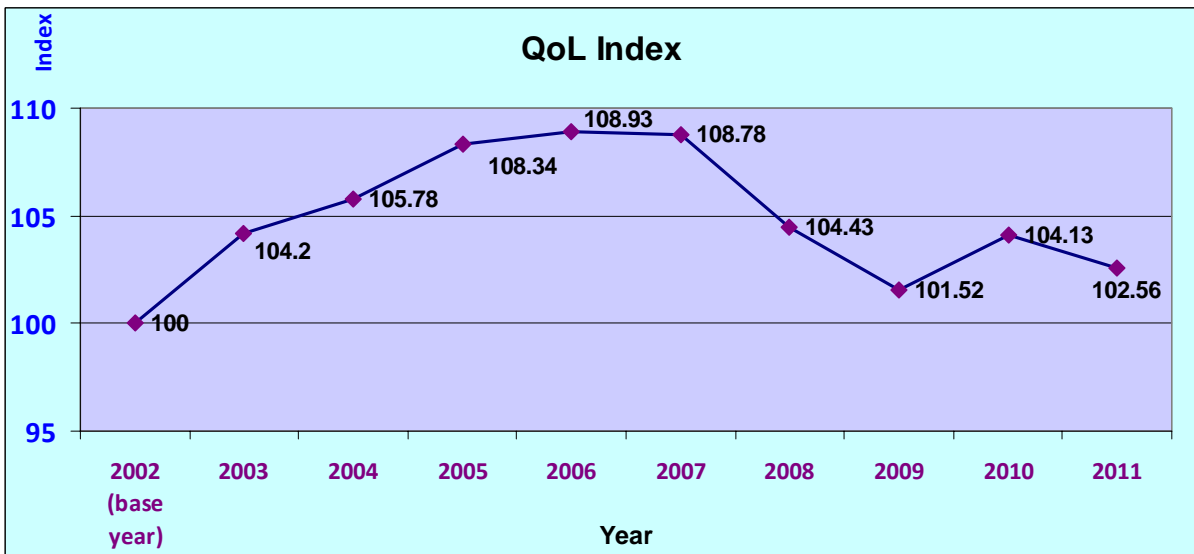
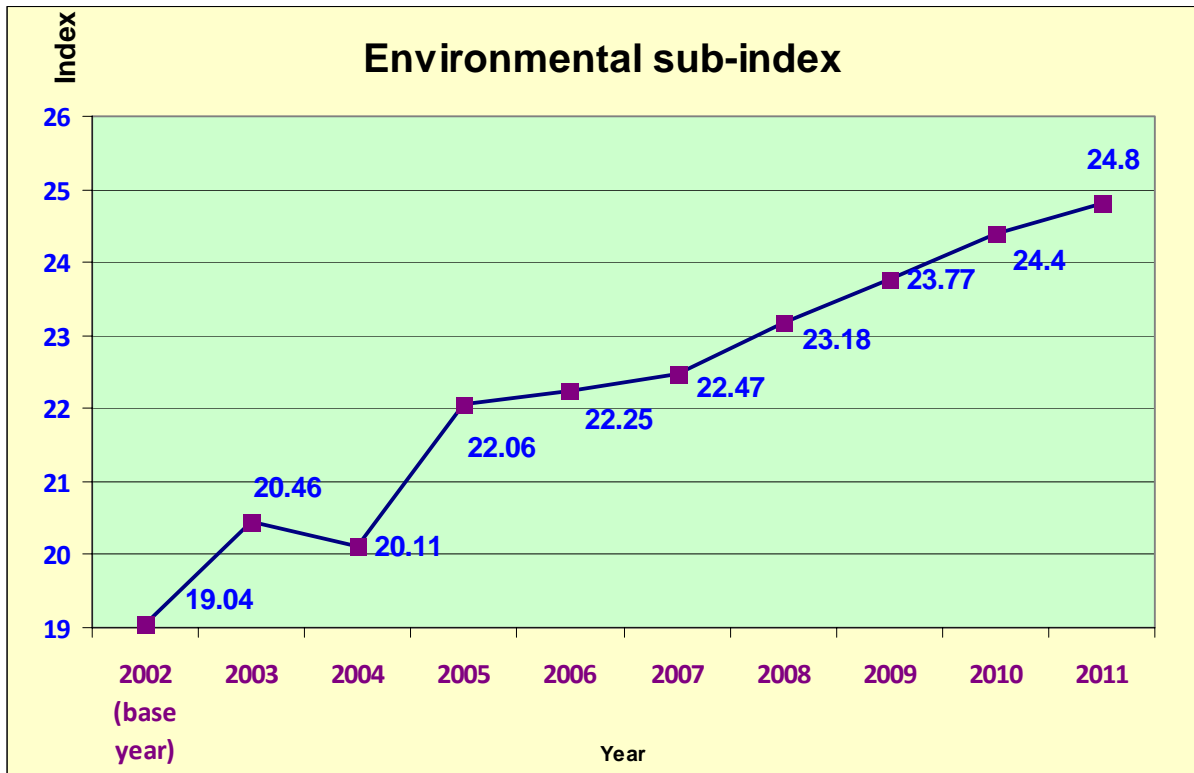
| | 2002 | 2003 | 2004 | 2005 | 2006 | 2007 | 2008 | 2009 | 2010 | 2011 |
|---|----------------------|----------------------|--------------------|--------------------|--------------------|--------------------|--------------------|--------------------|----------------------------------|------------------------------------|
| Social sub-index | | | | | | | | | | |
| 1. Standardized mortality rate (per 1000 standard population) | 3.70 | 3.80 | 3.80 | 3.70 | 3.50 | 3.50 | 3.50 | 3.40 | 3.4 | 3.2# |
| 1. Life expectancy at birth (in years) | F : 84.5 M : 78.6 | F : 84.3 M : 78.5 | F : 84.7 M : 79 | F: 84.6 M: 78.8 | F: 85.5 M: 79.4 | F: 85.5 M: 79.4 | F: 85.5 M: 79.3 | F: 85.9 M: 79.7 | F: 86.0 M: 80.1 | F: 86.7# M: 80.5# |
| 11. Public expenditure on health as a proportion (in percent) of the GDP | 2.70 | 2.70 | 2.70 | 2.30 | 2.10 | 2.20 | 2.00 | 2.30 | 2.20 | 2.30 |
| 3. Notification rate of notifiable infectious diseases (per 1000 population) | 3.73 | 2.33 | 2.89 | 2.91 | 3.27 | 3.65 | 2.38 | 6.85 | 3.02 | 3.09 |
| 4. Stress index | 100.00 | 88.75 | 79.51 | 72.95 | 74.42 | 72.91 | 80.36 | 80.00 | 75.53 | 77.45 |
| 5. General life satisfaction index | 100.00 | 100.68 | 105.62 | 109.94 | 112.47 | 110.22 | 107.57 | 111.66 | 111.46 | 109.01 |
| 6. Press freedom index | 100.00 | 101.22 | 100.26 | 101.43 | 101.55 | 103.92 | 103.64 | 103.54 | 102.30 | 101.95 |
| 7. Press criticism index | 100.00 | 103.75 | 91.02 | 78.82 | 77.25 | 81.86 | 83.65 | 79.15 | 83.10 | 86.29 |
| 8. Government performance index | 100.00 | 103.23 | 132.23 | 169.79 | 176.29 | 183.48 | 130.48 | 145.10 | 138.62 | 118.03 |
| 9. Overall crime rate (per 1000 population) | 11.18 | 12.99 | 11.81 | 11.37 | 11.83 | 11.67 | 11.25 | 11.08 | 10.76 | 10.68 |
| Economic sub-index | | | | | | | | | | |
| 10. Housing affordability ratio | 4.68 | 4.49 | 5.31 | 6.22 | 5.88 | 6.82 | 7.67 | 8.20 | 10.22 | 11.44 |
| 11. Real rental index | 87.97 | 79.67 | 84.55 | 93.11 | 96.68 | 105.27 | 114.54 | 98.99 | 115.38 | 122.68 |
| 12. Unemployment rate | 7.34 | 7.93 | 6.76 | 5.55 | 4.69 | 3.92 | 3.68 | 5.17 | 4.20 | 3.39 |
| 13. Index of current economic conditions | 76.55 | 81.32 | 99.95 | 109.75 | 109.48 | 116.70 | 81.55 | 83.40 | 96.22 | 88.50 |
| 14. Real wage index | 117.53 | 117.70 | 116.35 | 115.78 | 115.48 | 116.08 | 116.68 | 116.30 | 115.45 | 118.65 |
| 15. Public expenditure on education as a proportion (in percent) of the GDP | 4.10 | 4.40 | 4.40 | 4.00 | 3.80 | 3.50 | 3.40 | 4.50 | 3.30 | 3.30 |
| 16. Age participation rate for first-degree programmes in local universities (in percent) | 17.04 | 17.70 | 17.50 | 17.60 | 18.50 | 18.70 | 18.50 | 18.50 | 18.70 | 19.40 |
| Environmental sub-index | | | | | | | | | | |
| 17. Air index | 46.90 | 49.93 | 49.32 | 45.10 | 45.68 | 45.77 | 44.83 | 42.26 | 42.78 | 44.27 |
| 18. Water index | 74.40 | 75.60 | 78.30 | 80.80 | 80.80 | 80.70 | 81.70 | 81.40 | 84.20 | 87.07* |
| 19. Noise index (per 1000 population) | 1.84 | 1.43 | 1.63 | 1.24 | 1.28 | 1.15 | 1.07 | 1.02 | 0.97 | 0.91 |
| 20. Recycle rate of municipal solid waste | 36.30 | 40.82 | 40.35 | 43.09 | 45.59 | 44.96 | 47.58 | 49.30 | 51.95 | 53.65* |

* Forecasted figure
Provisional figure
Revised figure

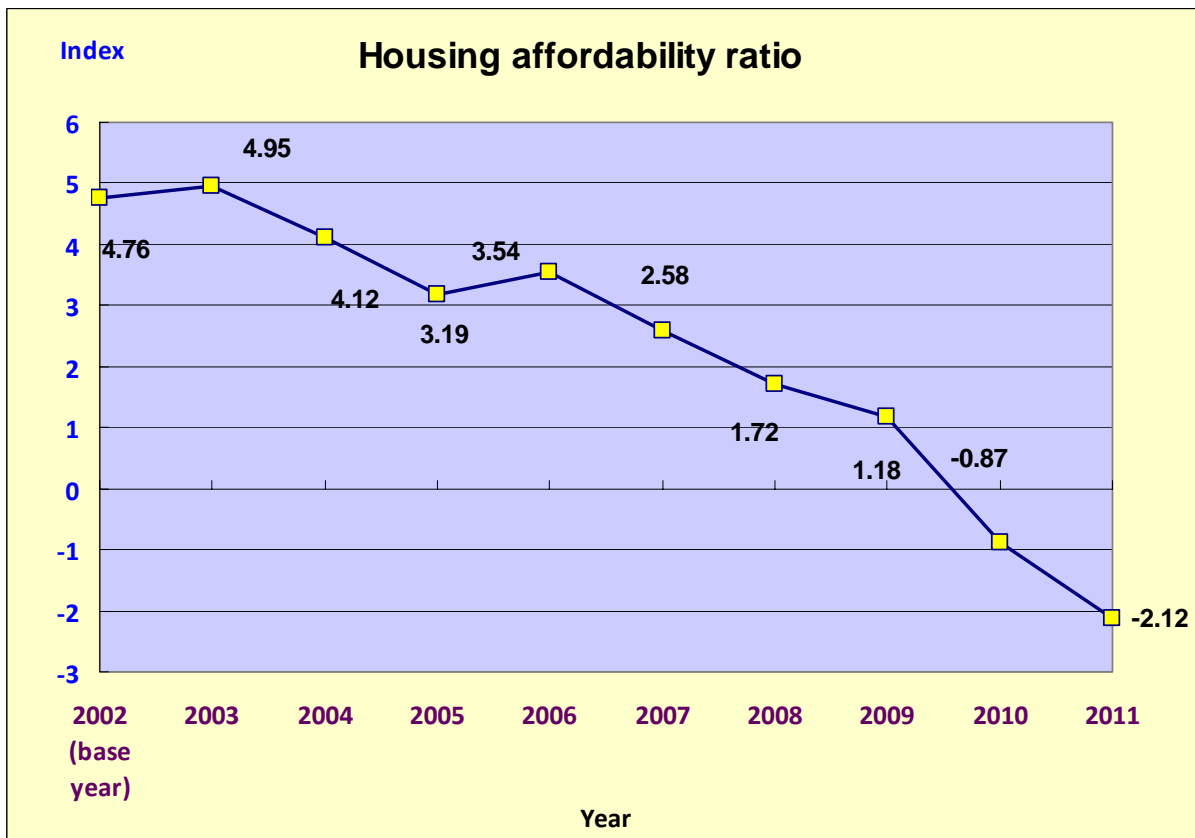
Appendix 3.1: Line Charts of CUHK Hong Kong Quality of Life Index and Sub-indices

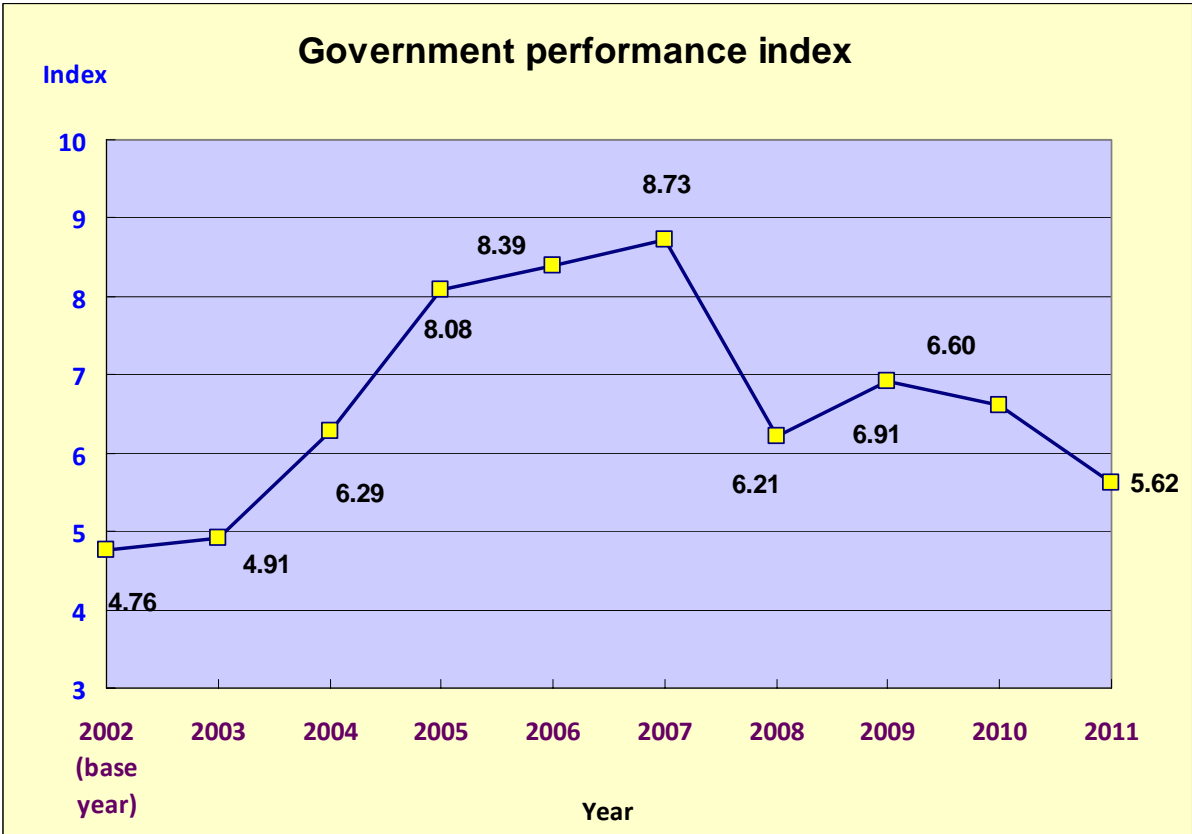
The higher the rate, the better performance for the indicator





Appendix 3.2: Line Charts of Selected Index

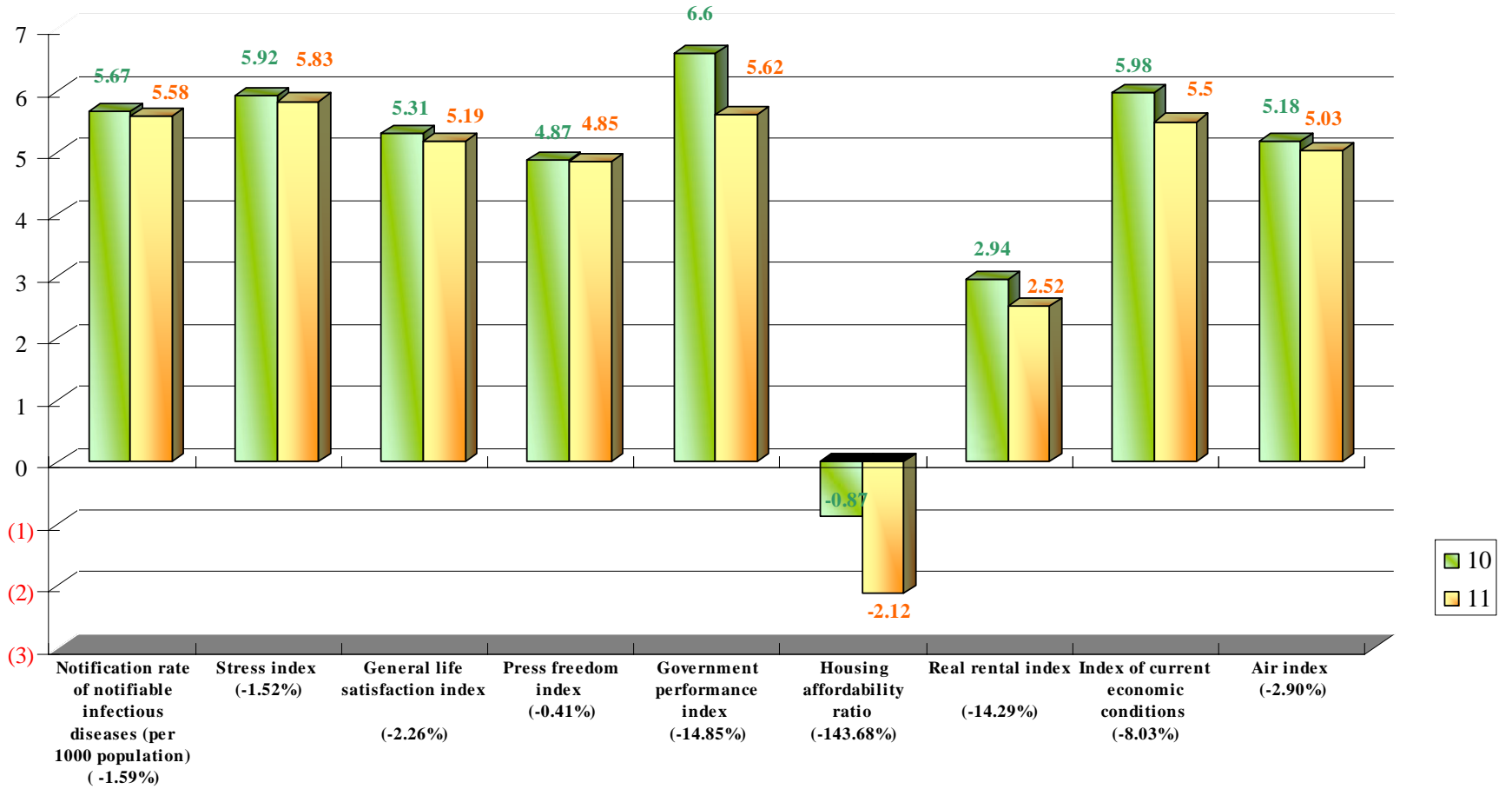




Appendix 4

**2010-2011 Quality of Life Indices
Worse Indices**

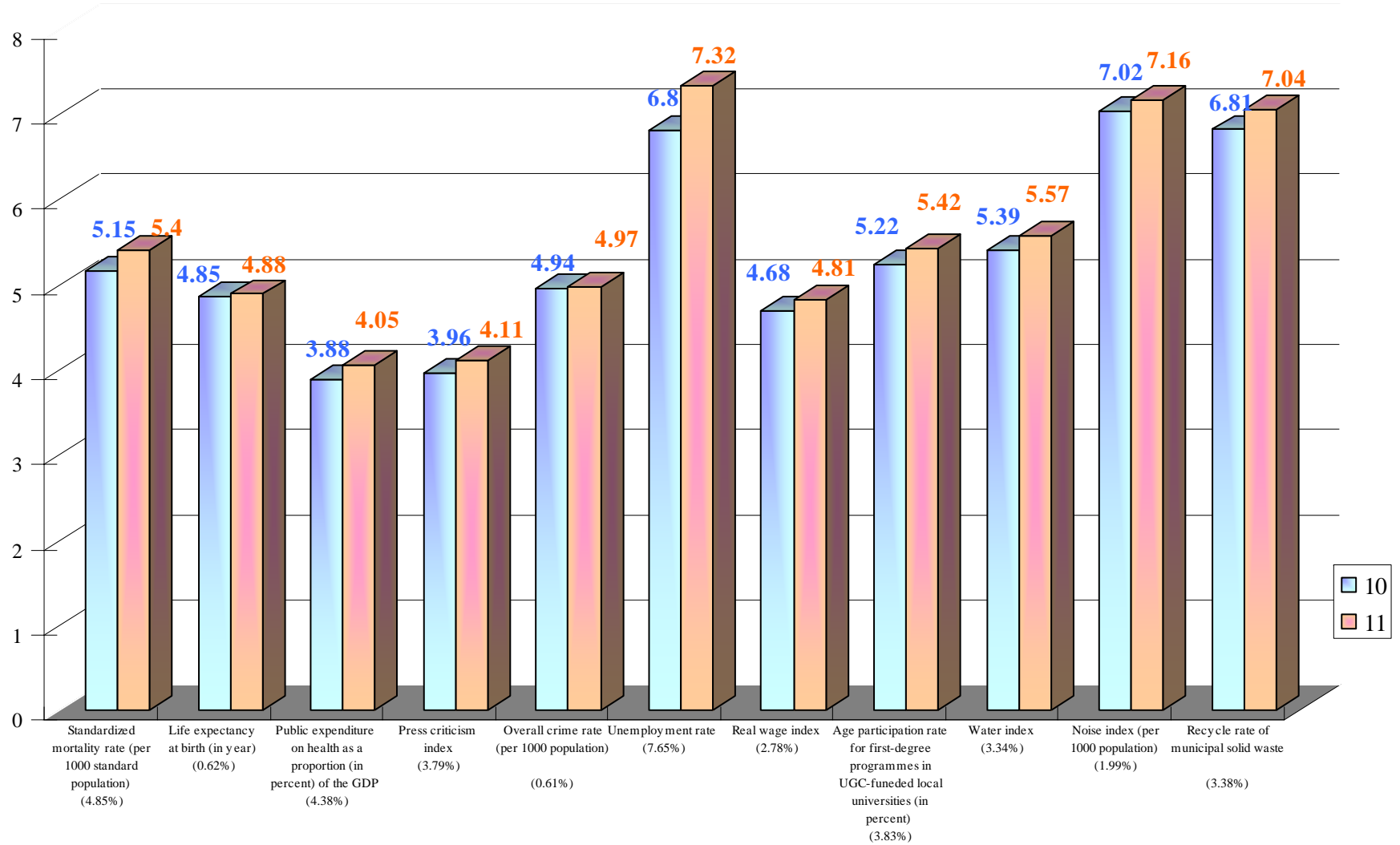
Quality of Life Index



() % decrease between 10 and 11

2010-2011 Quality of Life Indices
Better Indices

Quality of Life Index



() % increase between 10 and 11

Working Group of the CUHK Hong Kong Quality of Life Index

Prof. Ng Sai Leung
Director, Centre for Quality of Life
Associate Professor,
Department of Geography and Resource
Management, CUHK
Tel: 3943-6527
Email: slng@cuhk.edu.hk

Prof. Winnie W.S. Mak
Associate Professor,
Department of Psychology, CUHK
Tel: 3943-6577
Email: wsmak@psy.cuhk.edu.hk

Prof. Ting Kwok Fai
Professor,
Department of Sociology, CUHK
Tel: 3943-6626
Email: kfting@cuhk.edu.hk

Prof. Ma Ngok
Associate Professor,
Department of Government and Public
Administration, CUHK
Tel: 3943-7483
Email: mangok@cuhk.edu.hk

Prof. Ng Kai Hon
Assistant Professor,
Department of Government and Public
Administration, CUHK
Tel.: 3943-7486
Email: kaihongng@cuhk.edu.hk

Prof. Tsou Jin Yeu
Professor,
School of Architecture, CUHK
Tel: 3943-6558
Email: jinyeutsou@cuhk.edu.hk

Prof. Sunny K.S. Kwong
Associate Professor,
Department of Economics, CUHK
Tel: 3943-8198
Email: kaisunkwong@cuhk.edu.hk

Prof. Chong Tai Leung
Associate Professor,
Department of Economics, CUHK
Tel: 3943-8193
Email: chong2064@cuhk.edu.hk

Prof. Paul S.N. Lee
Dean, Faculty of Social Science
Professor, School of Journalism and
Communication, CUHK
Tel: 3943-6234
Email: plee@cuhk.edu.hk